

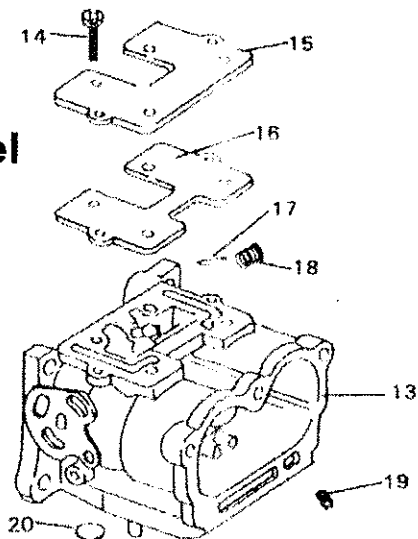
INSTRUCTION SHEET

Off Engine Carburetor Service Outboard Marine Corp. (2 Barrel)

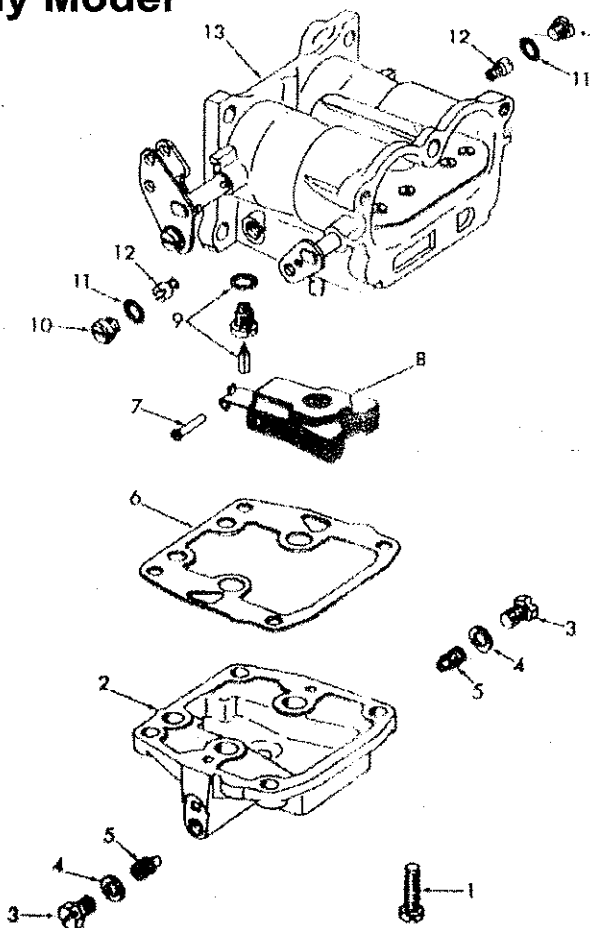
General Exploded View

The general design and parts shown will vary to individual units covered on this instruction sheet.

Late Model



Early Model



Disassembly

Use the exploded view as a guide. The numerical sequence may generally be followed to disassemble unit far enough for cleaning and inspection.

Nomenclature

Ref. No.

1. Screw (4) - Float Bowl
2. Foat Bowl Assembly
3. Plug (2) - Main Jet
4. Gasket (2) Plug
5. Jet (2) Main
6. Gasket, Float Bowl
7. Pin, Float
8. Float Assembly
9. Needle & Seat Assembly
10. Plug (2) - Idle Jet
11. O-Ring (2) - Idle Jet Plug
12. Jet (2) Idle
13. Main Body Assembly
14. Screw, Idle Channel Cover
15. Cover, Idle Channel
16. Gasket, Idle Channel
17. Roll Pin, Shaft
18. Spring, Throttle Return
19. Orifice
20. Core Plug

Cleaning

Cleaning must be done with unit disassembled. Soak parts to soften and remove all foreign material in cold immersion cleaner (maximum 15 minutes). Be sure all passages are cleaned of carbon and varnish deposits. Use compressed air to blow out all passages.

CAUTION: Do not soak any parts with rubber material or plastic float in cleaning solvents.

Reassembly

Reassemble in reverse order of disassembly. Note: Special instructions.

Special instructions

Float Level Adjustment

With the carburetor body in the inverted position, float should be parallel to the gasket surface of the carburetor body.

To adjust bend float arm

CAUTION: Do not exert pressure on resilient needle valve.

