



## BATTERY CHARGE KIT, P/N 5037558 INSTALLATION INSTRUCTIONS

### APPLICATION

This instruction sheet is a guide for proper installation of components supplied in this kit. These components are designed for use on 2005 and newer *Johnson* 9.9/15 HP 4-Stroke outboards. Refer to service manual and installation guides for additional assembly information.

### SAFETY INFORMATION

For safety reasons, this kit should be installed by an authorized *Evinrude*®/*Johnson*® dealer. This instruction sheet is not a substitute for work experience. Additional helpful information may be found in other service literature for your engine.

This instruction sheet uses the following signal words identifying important safety messages.

	<b>DANGER</b>	
<b>Indicates an imminently hazardous situation which, if not avoided, WILL result in death or serious injury.</b>		

	<b>WARNING</b>	
<b>Indicates a potentially hazardous situation which, if not avoided, CAN result in severe injury or death.</b>		

	<b>CAUTION</b>	
<b>Indicates a potentially hazardous situation which, if not avoided, MAY result in minor or moderate personal injury or property damage. It also may be used to alert against unsafe practices.</b>		

**IMPORTANT:** Identifies information that will help prevent damage to machinery and appears next to information that controls correct assembly and operation of the product.

These safety alert signal words mean:

**ATTENTION!  
BECOME ALERT!  
YOUR SAFETY IS INVOLVED!**

Always follow common shop safety practices. If you have not had training related to common shop safety practices, you should do so to protect yourself, as well as the people around you.

It is understood that this instruction sheet may be translated into other languages. In the event of any discrepancy, the English version shall prevail.

**DO NOT** do any repairs until you have read the instructions and checked the pictures relating to the repairs.

Be careful, and never rush or guess a service procedure. Human error is caused by many factors: carelessness, fatigue, overload, preoccupation, unfamiliarity with the product, and drugs and alcohol use, to name a few. Damage to a boat and outboard can be fixed in a short period of time, but injury or death has a lasting effect.

When replacement parts are required, use *Evinrude/Johnson Genuine Parts* or parts with equivalent characteristics, including type, strength and material. Using substandard parts could result in injury or product malfunction.

Torque wrench tightening specifications must be strictly followed. Replace any locking fastener (locknut or patch screw) if its locking feature becomes weak. Definite resistance to turning must be felt when reusing a locking fastener. If replacement is specified or required because the locking fastener has become weak, use only authorized *Evinrude/Johnson Genuine Parts*.

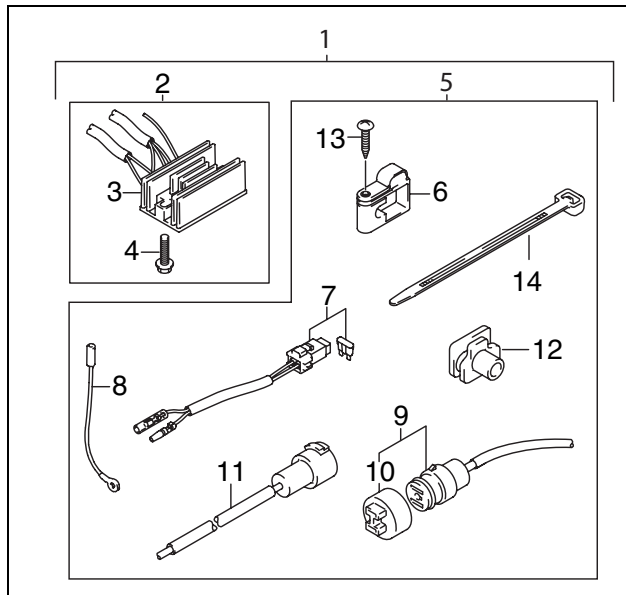
If you use procedures or service tools that are not recommended in this instruction sheet, **YOU ALONE** must decide if your actions might injure people or damage the outboard.

**TO THE INSTALLER:** Give this sheet to the owner. Advise the owner of any special operation or maintenance information contained in the instructions.

**TO THE OWNER:** Save these instructions in your owner's kit. This document contains information important to the future use and maintenance of your engine.



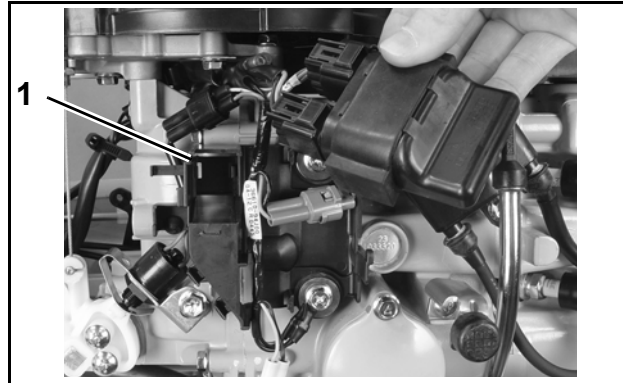
## CONTENTS OF KIT



Ref	P/N	Name of Part	Qt
1	5037558	BATTERY CHARGING KIT	1
2	5036262	*RECTIFIER/REGULATOR SET	1
3	5036261	**RECTIFIER/REGULATOR ASSY	1
4	5030990	**BOLT	2
5	5036286	*RECEPTACLE SET	1
6	5036273	**CLAMP	1
7	5036282	**FUSE HARNESS ASSY	1
8	5030364	**LEAD RECEPTACLE GROUND	1
9	5034257	**RECEPTACLE ASSY	1
10	5034258	***CAP	1
11	5034259	**PLUG, RECEPTACLE	1
12	5030367	**GROMMET, RECEPTACLE	1
13	5034083	**SCREW, CABLE CLAMP	1
14	320107	*TIE STRAP	2

## INSTALLATION

Remove lower PORT cover. Remove coil and electrical bracket.



1. Electrical bracket

006416

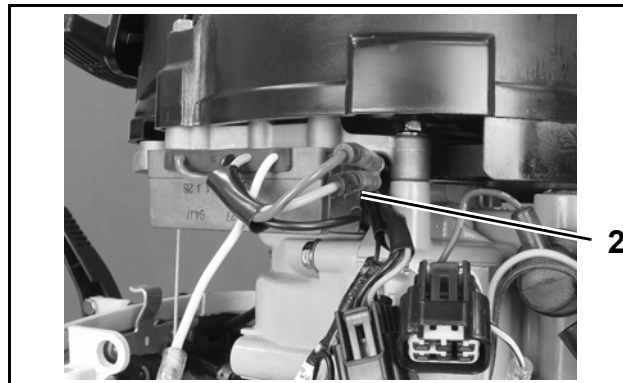
Remove screw and clamp from stator base.



006417

Connect red and yellow rectifier/regulator wires to charge coil wires. See "WIRING DIAGRAM" on page 4.

Install rectifier/regulator with screws provided. Position terminal of rectifier/regulator black wire (ground) on rear mounting screw. Tighten screws to 7 ft. lbs. (10 N·m).

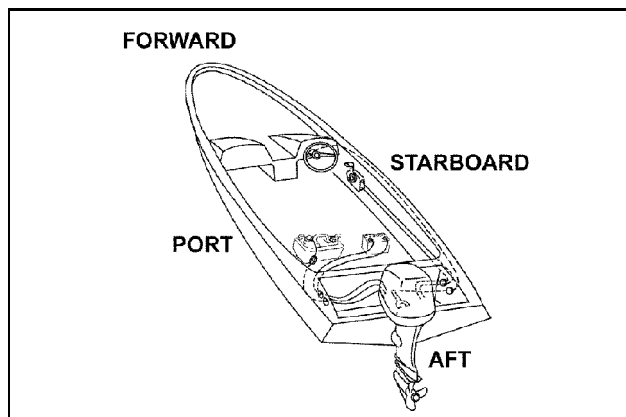


1. Terminal

006418

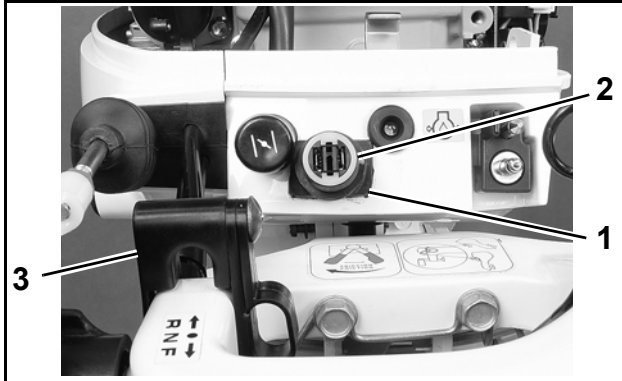
**⚠ WARNING ⚠**

**To prevent accidental starting while servicing outboard, disconnect battery leads from battery. Twist and remove all spark plug leads.**



Nautical Orientation

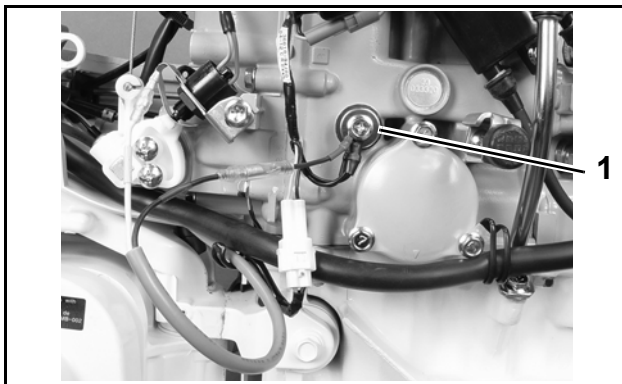
Install grommet in lower cover. Carefully route receptacle assembly wires through grommet and to the electrical bracket. Secure receptacle in grommet with tie strap. Install clamp with screw on steering bracket.



- 1. Grommet
- 2. Receptacle
- 3. Clamp

006419

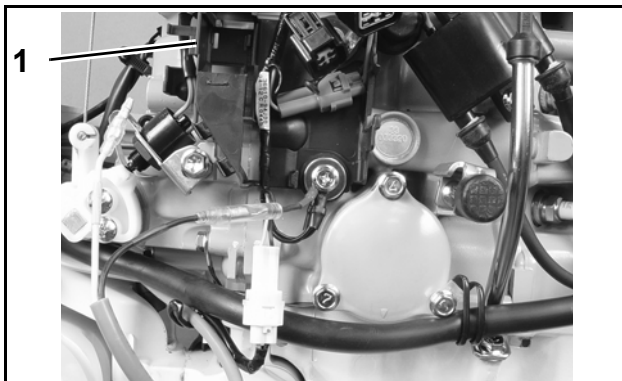
Connect receptacle assembly ground wire to receptacle ground lead. Install ground terminal on powerhead ground screw.



- 1. Ground screw

006420

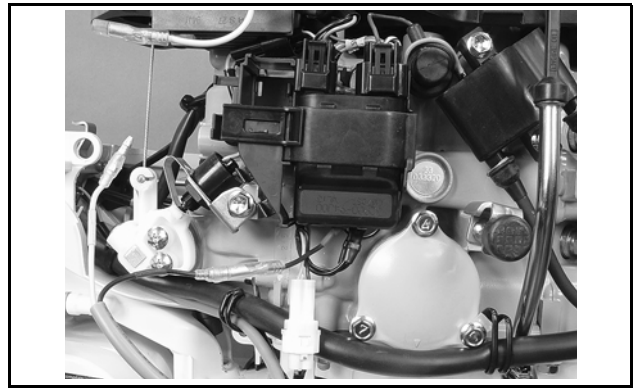
Reinstall electrical bracket.



- 1. Electrical bracket

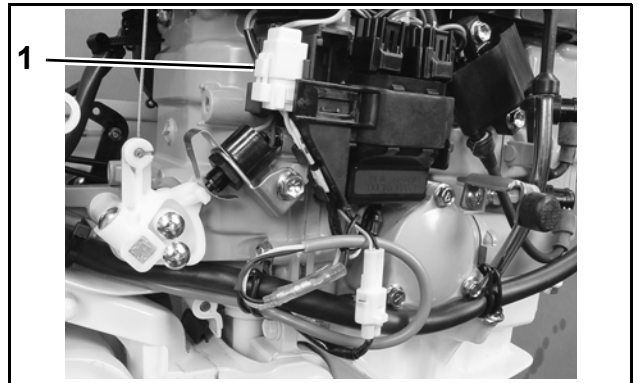
006421

Reinstall coil in electrical bracket.



006422

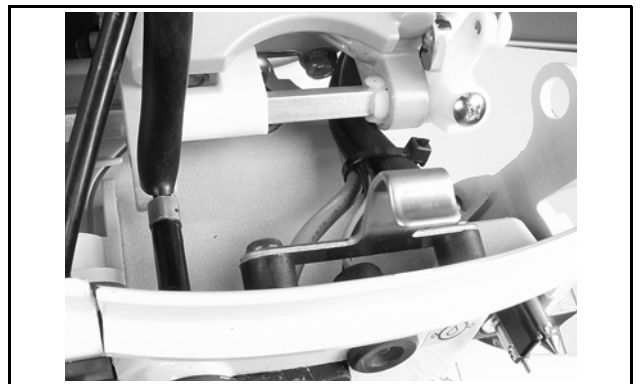
Connect fuse harness assembly between white rectifier/regulator wire and white receptacle assembly wire. Position fuse case in electrical bracket.



- 1. Fuse case

006423

Position wiring with tie strap as shown.



006424

Install lower cover and charge harness.



006425

Connect harness (receptacle plug) and battery to outboard prior to starting outboard.

Charge system provides 6 amp regulated charging for 12 volt, 35 amp hour (or larger) battery.

### WIRING DIAGRAM

