



TRIM & TILT PISTON SEAL KIT - P/N 5008985

APPLICATION

Use this kit to service the trim & tilt assemblies used on the outboards listed under **MODEL APPLICATIONS** on p. 2

SAFETY INFORMATION

The following symbols and/or signal words may be used in this document:

DANGER

Indicates a hazardous situation which, if not avoided, will result in death or serious injury.

WARNING

Indicates a hazardous situation which, if not avoided, could result in death or serious injury.

CAUTION

Indicates a hazardous situation which, if not avoided, could result in minor or moderate personal injury.

NOTICE Indicates an instruction which, if not followed, could severely damage engine components or other property.

These safety alert signal words mean:

ATTENTION!

BECOME ALERT!

YOUR SAFETY IS INVOLVED!

For safety reasons, this kit must be installed by an authorized *Evinrude/Johnson*® dealer. This instruction sheet is not a substitute for work experience. Additional helpful information may be found in other service literature.

DO NOT perform any work until you have read and understood these instructions completely.

Torque wrench tightening specifications must strictly be adhered to.

Should removal of any locking fastener (lock tabs, locknuts, or patch screws) be required, always replace with a new one.

When replacement parts are required, use *Evinrude/Johnson Genuine Parts* or parts with equivalent characteristics, including type, strength and material. Use of substandard parts could result in injury or product malfunction.

Always wear EYE PROTECTION AND APPROPRIATE GLOVES when using power tools.

Unless otherwise specified, engine must be OFF (not running) when performing this work.

Always be aware of parts that can move, such as flywheels, propellers, etc.

Some components may be HOT. Always wait for engine to cool down before performing work.

If you use procedures or service tools that are not recommended in this instruction sheet, YOU ALONE must decide if your actions might injure people or damage the outboard.

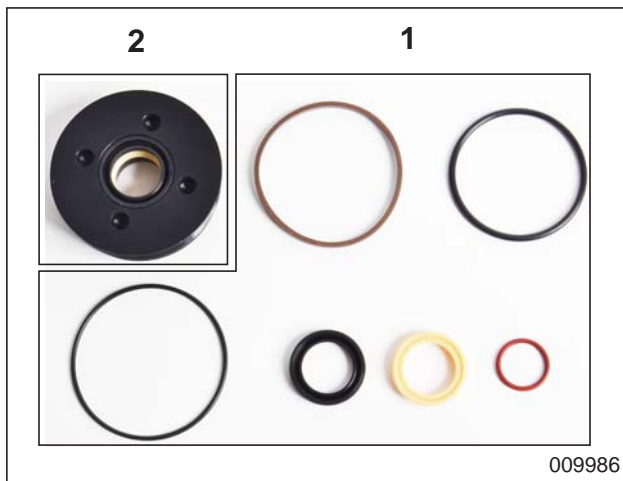
This instruction sheet may be translated into other languages. In the event of any discrepancy, the English version shall prevail.

TO THE INSTALLER: Give this sheet and the operating instructions to the owner. Advise the owner of any special operation or maintenance information contained in the instructions.

TO THE OWNER: Save these instructions in your owner's kit. This sheet contains information important for the use and maintenance of your engine.



TRIM & TILT PISTON SEAL KIT



Ref	P/N	Description	Qty
–	5008985	TRIM & TILT PISTON SEAL KIT	1
1	5008773	CYLINDER SEAL KIT	1
2	5008917	END CAP ASSEMBLY†	1

†. Do NOT use this end cap on Hydraulic Assembly, P/N 5005756.

MODEL APPLICATIONS

Models	Hydraulic Assembly P/N	Manifold Description
75 – 90 HP (1.3L) Inline	5005756	Painted Gloss Black
115 – 130 HP 60° V4 (1.7L)	5007776	Anodized Flat Black
	5008949	

Use Trim & Tilt Piston Seal Tool Kit, P/N 5008918, and its instruction sheet, to install the components of this kit.

HYDRAULIC ASSEMBLY 5005756 ONLY

NOTICE The end cap from hydraulic assembly, P/N 5005756, contains a machined groove on its underside, it **MUST** be resealed and reused.

The new end cap included in this seal kit does not contain the machined groove. Do NOT use this new end cap on hydraulic assembly, P/N 5005756, incorrect operation

and permanent damage of the trim and tilt unit may occur.

All other components of the kit may be used as required.

END CAP IDENTIFICATION:



1. End cap for hydraulic assembly, P/N 5005756
2. End cap for hydraulic assembly, P/N's 5007776 and 5008949

END CAP RESEAL PROCEDURE FOR HYDRAULIC ASSEMBLY, P/N 5005756

Remove the o-ring.



1. O-ring

Remove the wiper seal.



1. Wiper seal

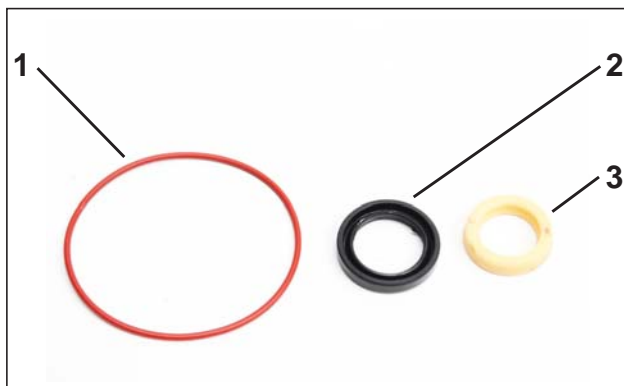
Remove the u-cup.



1. U-cup

009982

IMPORTANT: Discard the o-ring, wiper seal, and u-cup. Do NOT reuse them.



1. O-ring
2. Wiper seal
3. U-cup

009984

Clean the end cap thoroughly.

Lubricate and install the new u-cup with the lip side facing the bottom of the end cap.



1. U-cup

009982

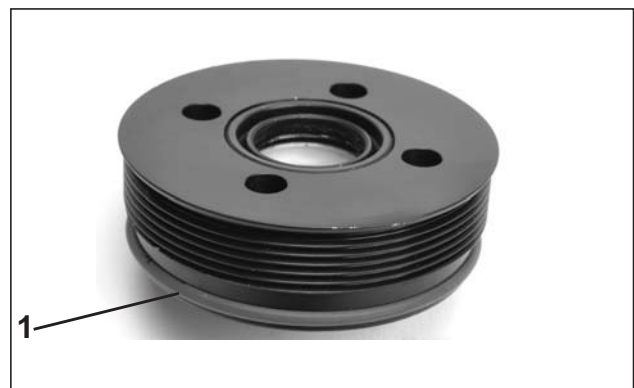
Lubricate and install the new wiper seal with the lip side facing the top of the end cap.



1. Wiper seal

009985

Lubricate and install the new o-ring.



1. O-ring

009983

Lubricate the threads of the end cap prior to assembly.