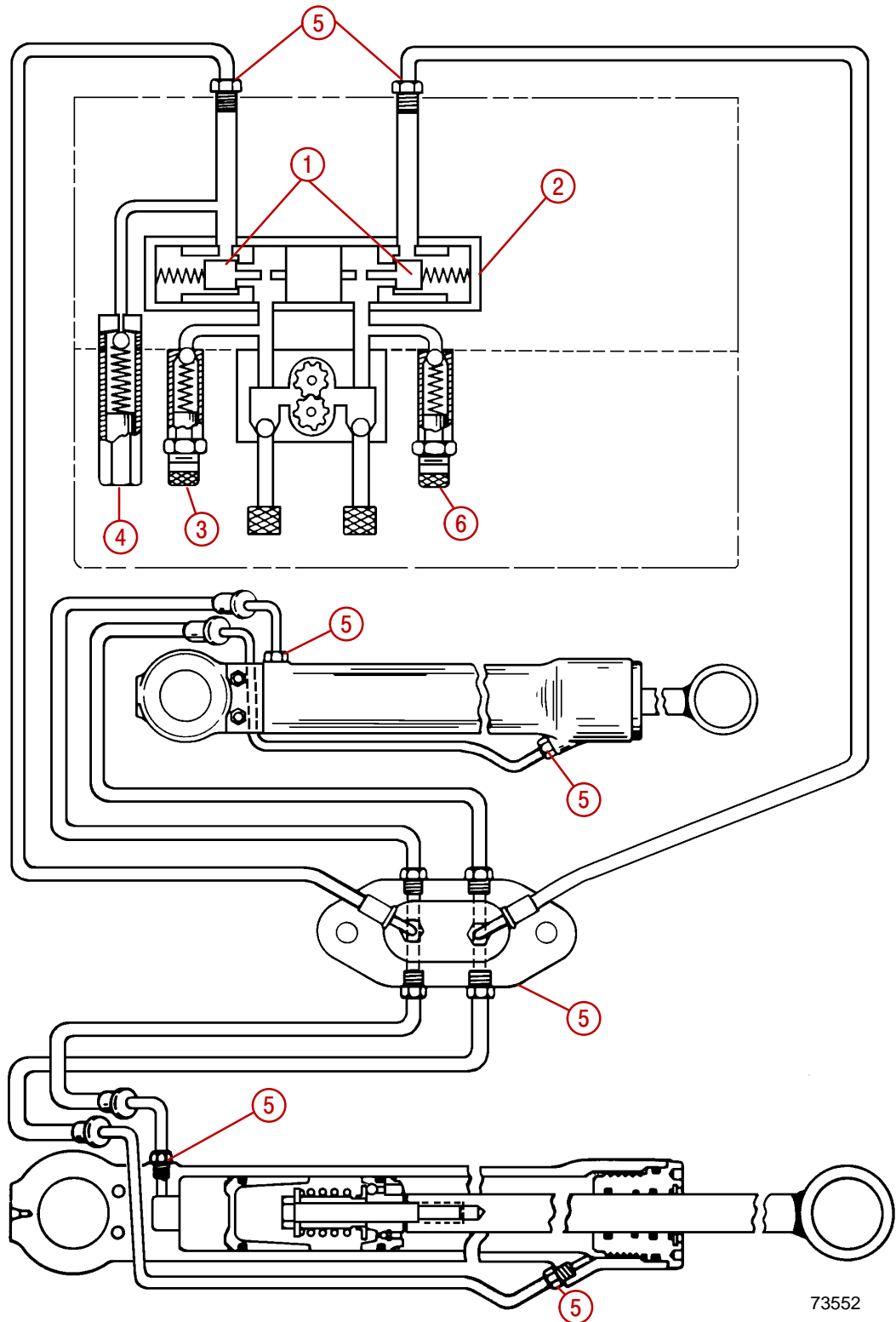


# Trim Pump Hydraulic System



73552

- 1 - Shuttle
- 2 - Pump Adaptor
- 3 - OUTUP/ Pressure Relief Valve

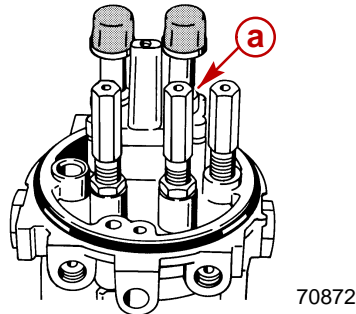
- 4 - Thermal Relief Valve
- 5 - Fitting
- 6 - IN/DOWN Pressure Relief Valve

## UP Pressure Relief Valve Replacement

**NOTE:** The UP pressure relief valve in the kit is color coded blue for easy identification.

**IMPORTANT:** A difference exists between the factory installed and the replacement pressure relief valves. Once the jam nut is loosened on a factory installed relief valve, the valve is out of adjustment.

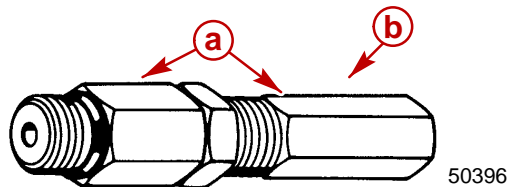
**IMPORTANT:** When installing a replacement pressure relief valve, DO NOT loosen or attempt to remove the hex "jam" nut. This valve is preset at the factory for proper UP pressure relief.



**a** - Factory Installed UP Pressure Relief Valve

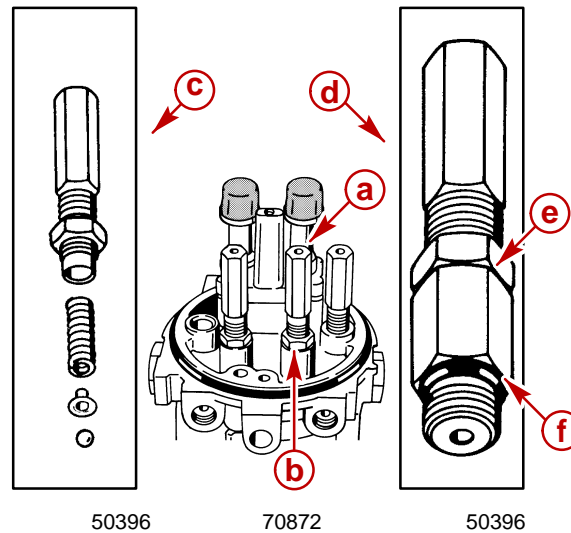
**NOTE:** Original factory installed pressure relief valves will be a natural steel finish - they will NOT be color coded.

1. Replace the UP pressure relief valve. Ensure that the threaded hole is free of dirt. Lubricate the O-ring at the base of the new valve with Power Trim and Steering Fluid and install. Torque to 70 lb-in. (7.9 Nm).



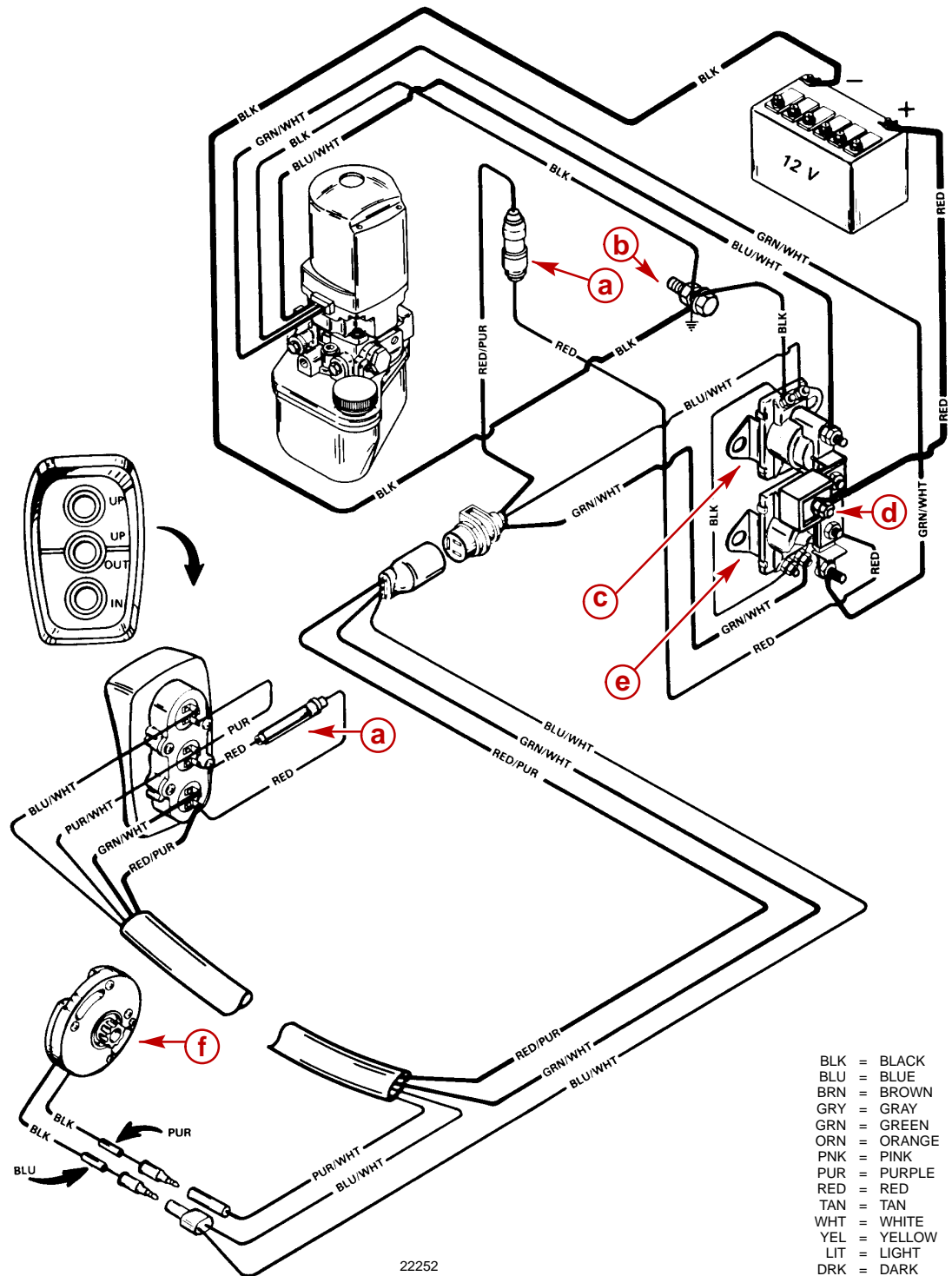
**Current Replacement Pressure Relief Valve**

- a** - Replacement UP Pressure Relief Valve
- b** - Color Coded Blue Area

**Original Factory Installed Pressure Relief Valve**

- a** - Original Factory Installed UP Pressure Relief Valve
- b** - Jam Nut - Loosen Before Removing the Valve
- c** - Be Sure to Remove the Pump Body Components (Spring, eyelet, Check Ball) - Discard
- d** - Replacement UP Pressure Relief Valve (Blue) - Use the Base of the valve for tightening
- e** - Jam Nut - DO NOT TURN or Attempt to Loosen
- f** - O-ring

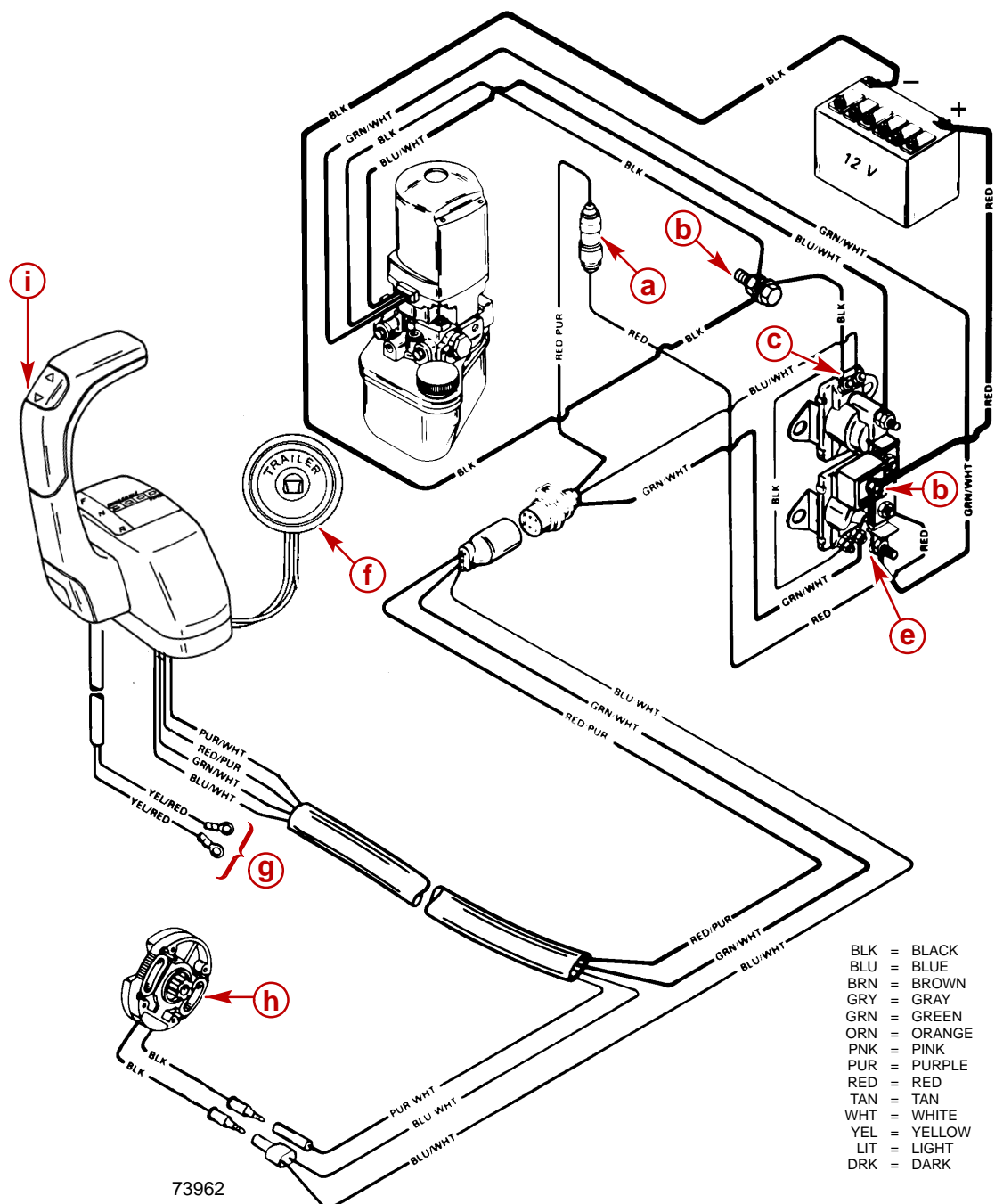
# Trim Pump Wiring Diagrams



## Model With Three-Button Trim/Trailer Panel

- a - 20 Amp Fuse
- b - Ground Bolt (Floor Mount)
- c - UP Solenoid
- d - DOWN Solenoid
- e - Trim Limit Switch
- f - 110 Amp Fuse

# Model With Trim In Handle and Trailer Switch Separate



- a** - 20 Amp Fuse
- b** - Ground Bolt (Floor Mount)
- c** - UP Solenoid
- d** - 110 Amp Fuse
- e** - DOWN Solenoid

- f** - Trailer Switch
- g** - Neutral Switch To Instrument Wiring Harness
- h** - Trim Limit Switch
- i** - Trim Buttons