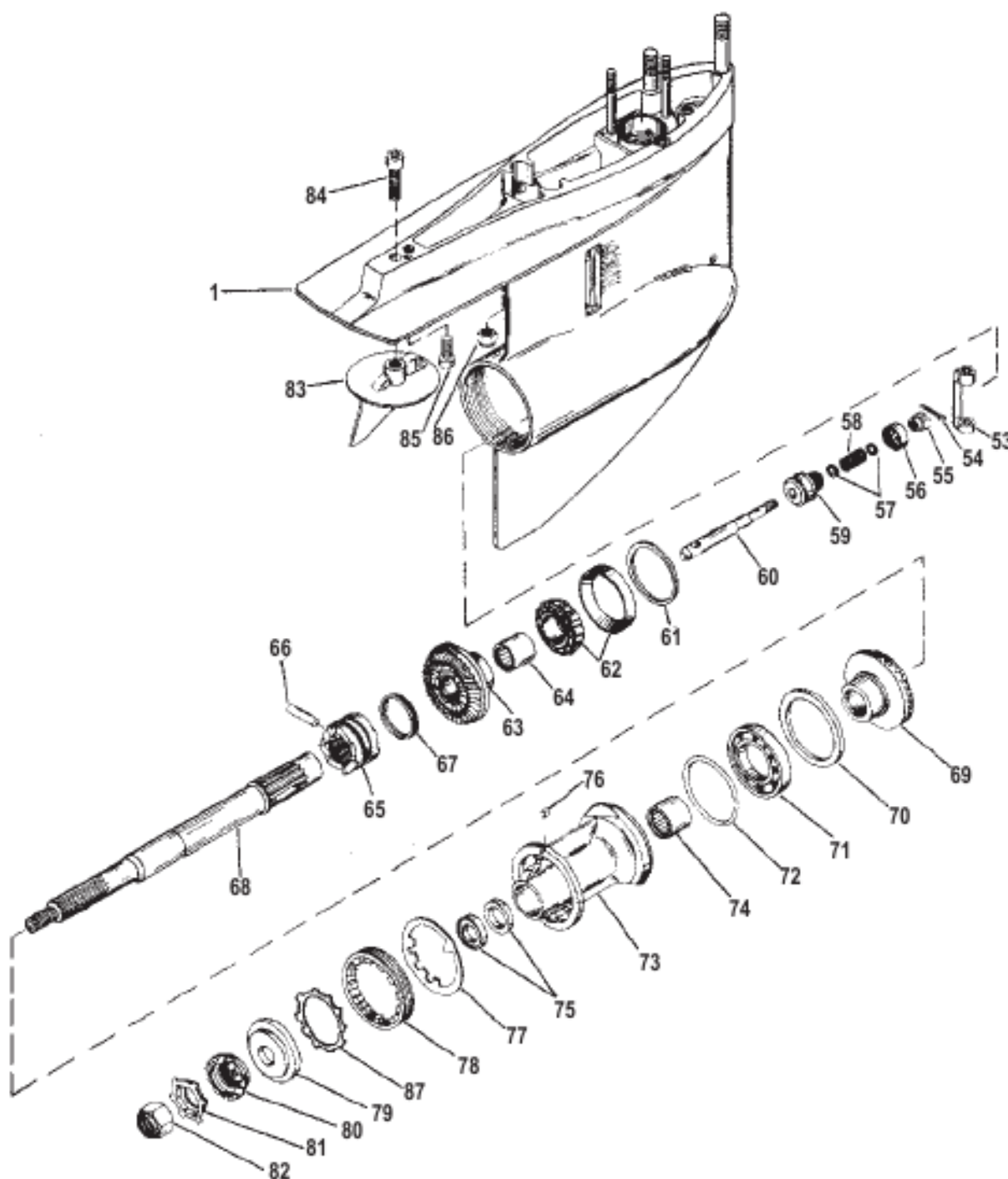


## GEAR HOUSING (PROPELLER SHAFT) - MR



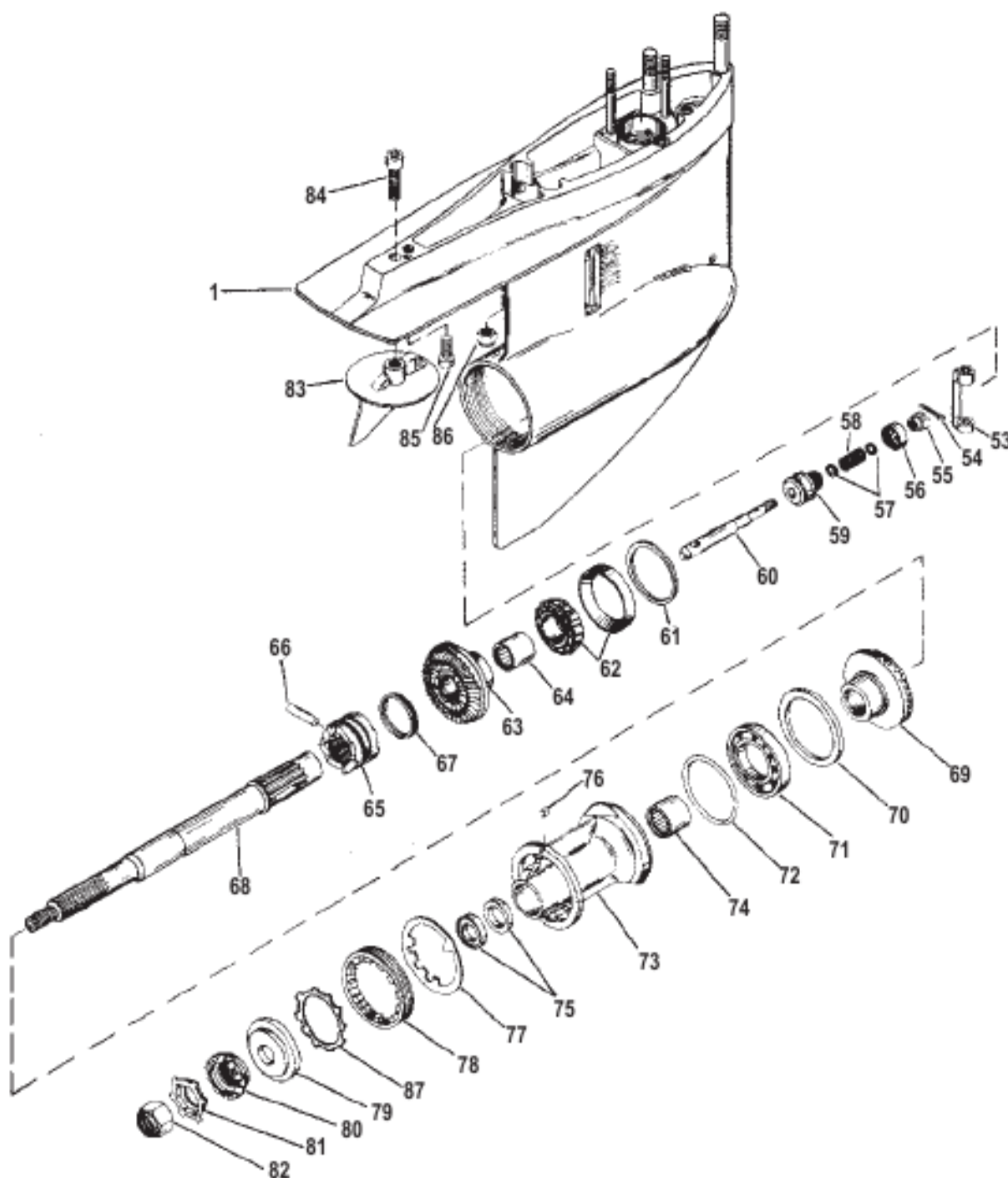
30071

## GEAR HOUSING (PROPELLER SHAFT) - MR

Ref #	Part Class	Part Number	Description	Comments	Qty	Note
--	1623	8951A43	GEAR HOUSING ASSEMBLY COMPLETE BLACK		1	
1	1623	8951A37	GEAR HOUSING ASSEMBLY		1	
53	0000	76865	CRANK Shift		1	
54	0018	469501	COTTER PIN		1	
55		NSS	NOT SOLD SEPARATE Adjusting, Shaft	(Replacement Spool Assembly 818349T1)	1	
56		NSS	NOT SOLD SEPARATE Spring Shaft	(Replacement Spool Assembly 818349T1)	1	
57		NSS	NOT SOLD SEPARATE Clutch Actuating Shaft	(Replacement Spool Assembly 818349T1)	2	
58		NSS	NOT SOLD SEPARATE Compression	(Replacement Spool Assembly 818349T1)	1	
59		NSS	NOT SOLD SEPARATE Clutch Actuating Shaft	(Replacement Spool Assembly 818349T1)	1	
60		NSS	NOT SOLD SEPARATE Clutch Actuating	(Replacement Spool Assembly 818349T1)	1	
61	0015	47397A1	SHIM SET		AR	
62	0031	35928T1	BEARING ASSEMBLY Tapered Roller		1	
63		NSS	NOT SOLD SEPARATE		1	
64	0031	42679	BEARING Roller (TORRINGTON #GB-1616)		AR	
64	0031	30895T	BEARING Needle (TORRINGTON #B-1616)		AR	
65	0052	853594T	CLUTCH		1	
66	0017	30632	PIN Cross		1	
67	0024	30893	SPRING		1	
68	0044	824110	PROPELLER SHAFT		1	
69	0043	824109A1	GEAR ASSEMBLY Reverse		1	
70	0000	681001	RING Thrust		1	
71	0030	88957T	BEARING Ball		1	
72	0025	31534	O-RING		1	
73	0000	73020A14	CARRIER ASSEMBLY Bearing (CASTING #73020C)		1	
73	0000	818763A10	CARRIER ASSEMBLY Bearing (CASTING #73020C1)		1	
74	0031	30956T	BEARING Needle		1	
75	0026	76868	SEAL		2	
75	0026	14077	SEAL Oil (INSIDE) CUTTER SEAL		1	
75	0026	12224	SEAL Fish Line Cutting (OUTSIDE) CUTTER SEAL		1	
76	0028	30281	KEY		1	
77	0014	79447	TAB WASHER (USE WITH 73020C CARRIER)		1	
77	0014	18323	TAB WASHER (USE WITH 73020C1 CARRIER)		1	
78	0000	79448	RETAINER		1	
79	0012	8354671	THRUST HUB (FOR USE W/ BLACK MAX PROPELLERS)		1	

## GEAR HOUSING (PROPELLER SHAFT) - MR

## GEAR HOUSING (PROPELLER SHAFT) - MR



30071

## GEAR HOUSING (PROPELLER SHAFT) - MR

Ref #	Part Class	Part Number	Description	Comments	Qty	Note
79	0000	56292A4	THRUST HUB (FOR USE W/M/C I PROPELLERS)		1	
80	0012	31211A3	WASHER SPLINED		1	
81	0014	816629	TAB WASHER		1	
82	0011	52707Q1	PROP NUT KIT (.750-16)		1	
83	0097	31640Q4	TRIM TAB (2-3/8 inch)		1	
83	0000	34127T2	TRIM TAB ASSEMBLY (4 inch)	THIS TRIM TAB CANNOT BE USED WITH BLACK MAX PROPELLERS	OPT	
84	0010	32470	SCREW (.437-14 x 1.75)		1	
85	0010	30206	SCREW (.375-16 x 1.00) Stainless Steel		1	
86	0011	859116	NUT (.437-20)		2	
87	0013	423511	LOCKWASHER Toothed		1	
-	0026	33144A2	SEAL KIT		1	
-	0043	96084A2	GEAR REPLACEMENT KIT		1	
-	0043	878087A4	GEAR SET		1	
-	0031	803090T1	BEARING AND SEAL KIT		1	
-	0043	803091T1	REPAIR KIT Lower Unit		1	