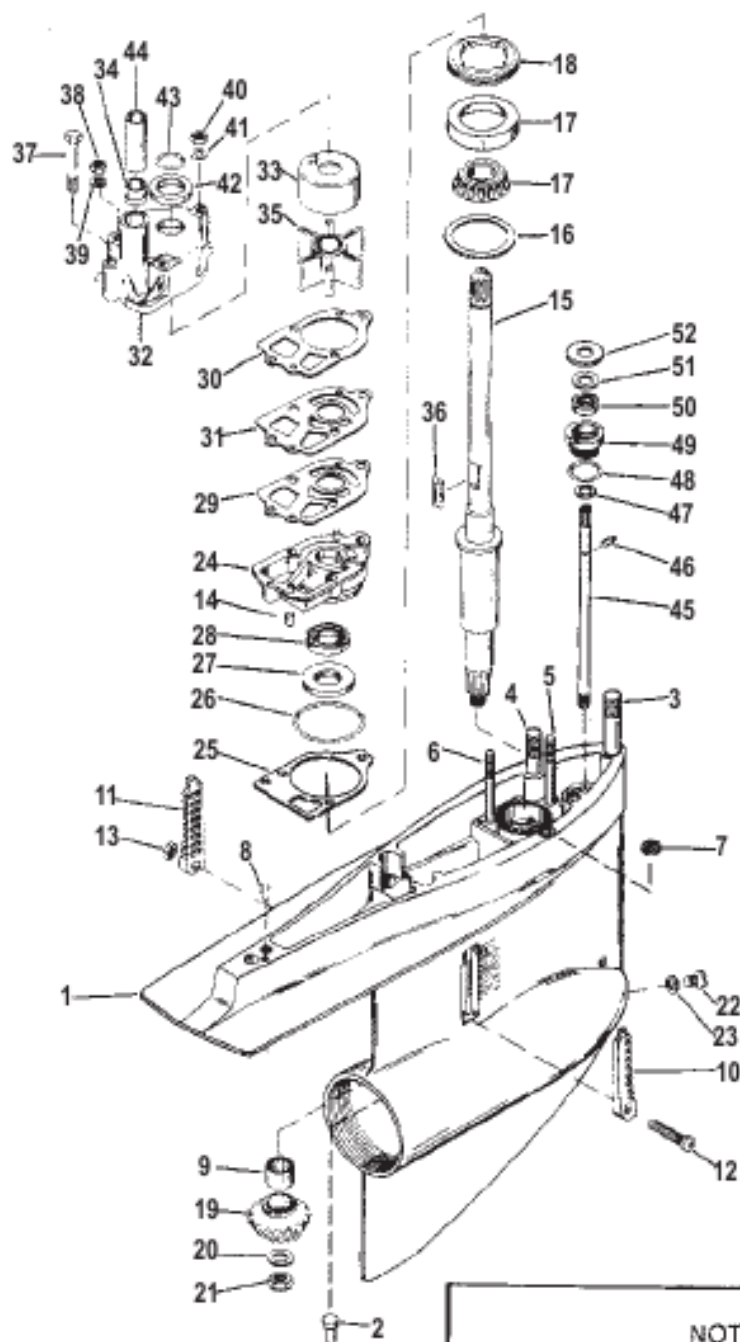


GEAR HOUSING (DRIVESHAFT) - MR



NOTE

This gear housing has the letter
"A" or "M" stamped on the end of the
propeller shaft for identification.

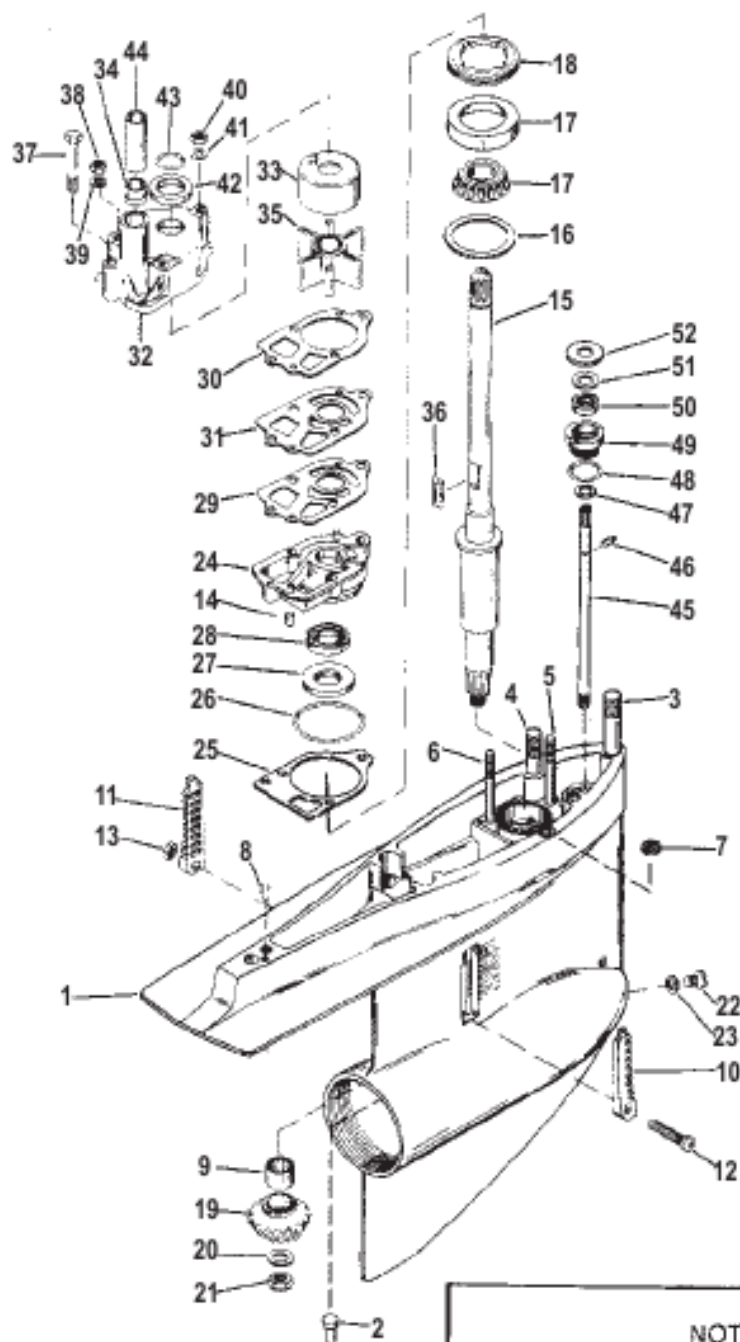
30070

GEAR HOUSING (DRIVESHAFT) - MR

Ref #	Part Class	Part Number	Description	Comments	Qty	Note
--	1623	8951A43	GEAR HOUSING ASSEMBLY COMPLETE (BLACK)		1	
1	1623	8951A37	GEAR HOUSING ASSEMBLY (BLACK)		1	
2	0017	379721	PIN		1	
3	0016	46911	STUD (3-3/16 inch)		1	
4	0016	56298	STUD (.437 X 1.97) (1-31/32 inch)		2	
5	0016	562972	STUD (.312-18/.324-24 x 3.380)		1	
6	0016	69501	STUD (3-1/4 inch)		2	
7	0026	455771	SEAL	See Note 1	1	
8	0017	35973	PIN Dowel		2	
9	0031	42647A1	BEARING ASSEMBLY Roller		1	
10	0000	934231	INSERT (STARBOARD) (BLACK)		1	
11	0000	934241	INSERT (PORT) (BLACK)		1	
12	0010	76156	SCREW (#10-32 x 1.88)		1	
13	0011	45812	NUT (#10-32) Stainless Steel		1	
14	0017	42836	PIN Groove		1	
15	0045	42634	DRIVESHAFT ASSEMBLY		1	
16	0015	42637A1	SHIM SET		AR	
17	0031	36387A1	BEARING ASSEMBLY Roller/Cup		1	
18	0000	8245191	RETAINER		1	
19	0043	878087A4	GEAR SET (INCLUDES PINION AND FORWARD GEARS)		1	
20	0012	92721	WASHER		1	
21	0011	35921	NUT (.625-18)		1	
22	0022	67892A1	FITTING KIT Magnetic, Plug Fill/Drain		1	
23	0012	191832	WASHER	(Component of Drive Shaft Housing Seal Kit 26-32511A) See Note 1	1	
24	0046	44292A3	BASE ASSEMBLY Water Pump		1	
25	0027	426311	GASKET		1	
26	0025	90011	O-RING (2.175 x .175)		AR	
26	0025	38099	O-RING (2.109 I.D.)		AR	
27	0026	89238	SEAL Oil		1	
28	0026	16977	SEAL Oil		1	
29	0027	856081	GASKET LOWER	See Note 1	1	
30	0027	858524	GASKET UPPER	See Note 1	1	
31	0000	32435	FACE PLATE	See Note 1	1	
32	0046	96148T1	BODY ASSEMBLY Water Pump		1	
33	0000	48752T	INSERT		1	
34	0026	38970	SEAL RUBBER		1	
35	0047	89984T4	IMPELLER	See Note 1	1	
36	0028	56654	KEY	See Note 1	1	
37	0010	96411	SCREW (#14-8 x 2.25)		1	
38	0011	13438	NUT (.250-28)		2	

GEAR HOUSING (DRIVESHAFT) - MR

GEAR HOUSING (DRIVESHAFT) - MR



NOTE

This gear housing has the letter
"A" or "M" stamped on the end of the
propeller shaft for identification.

30070

GEAR HOUSING (DRIVESHAFT) - MR

Ref #	Part Class	Part Number	Description	Comments	Qty	Note
39	0012	29245	WASHER (.281 x .500 x .060) Stainless Steel		2	
40	0011	13436	NUT (5/16-24)		1	
41	0012	36001	WASHER		1	
42	0025	30271	RING Rubber	(Component of Water Pump Impeller Kit 47-89984T5)	1	
43	0025	30613	O-RING UPPER	(Component of Water Pump Impeller Kit 47-89984T5)	1	
44	0023	29804T	SLEEVE GUIDE	(Component of Water Pump Impeller Kit 47-89984T5)	1	
45	0000	774811	SHIFT SHAFT		1	
46	0053	29641	E RING		1	
47	0012	27880	WASHER		1	
48	0025	25439	O-RING (.862 x .103)		1	
49	0023	30617A2	BUSHING ASSEMBLY		1	
50	0026	892361	SEAL Oil		1	
51	0012	31266	WASHER RUBBER		1	
52	0012	29395	WASHER (.390 x 1.00 x .06)		1	
-	0026	33144A2	SEAL KIT		1	
-	0026	32511A1	SEAL KIT		1	
-	0046	96148A8	WATER PUMP REPAIR KIT		1	
-	0043	878087A4	GEAR SET		1	
-	0031	803090T1	BEARING AND SEAL KIT		1	
-	0043	803091T1	REPAIR KIT Lower Unit		1	
-	0046	44292A3	BASE ASSEMBLY Water Pump		1	
-	0047	89984T5	IMPELLER KIT Water Pump		1	