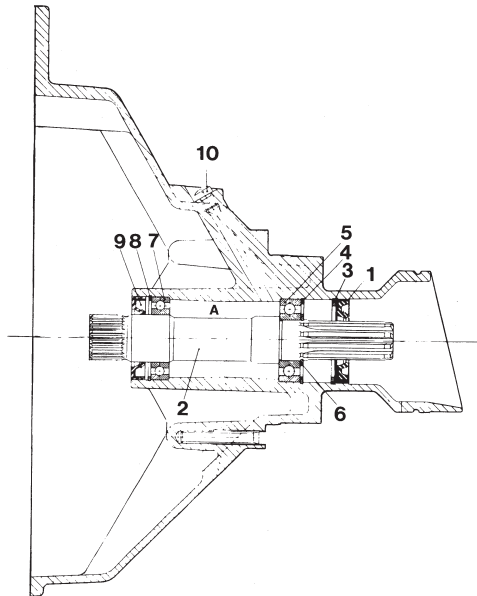


Overhauling the flywheel housing

There are two different flywheel housings installed on the engines. An earlier execution intended for 13" flywheels. Here the primary shaft is journalled in two ball bearings. Description and repair instructions, see step 247.

The later execution of flywheel housing is intended for 14" flywheels. In this flywheel housing the primary shaft is journalled in one ball bearing. The front end of the primary shaft is journalled in a friction bearing in the crank shaft. Description and repair instructions, see step 248.



247. Inspect the flywheel housing and replace defective parts. Press in and out bearings and seals using tools 884359-1, 884596-8 and 884599-2. Note how the seals are fitted (what way they are facing) before removal.

Remove in the following order:

Remove seal (1) and the retainer rings (3) and (4). Press the primary shaft (2) together with the bearing (5). Remove the retaining ring (6) before pressing the bearing off the primary shaft. Thereafter, remove the seal (9) and retainer ring (8). Bearing (7) can then be pressed out.

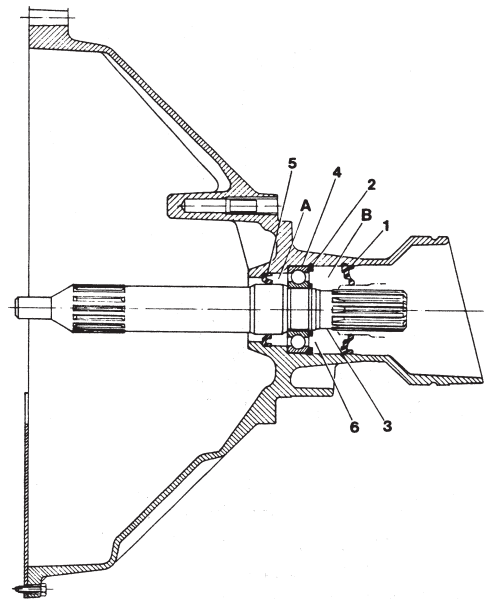
Assemble in the following order:

Press on front bearing (7) and fit the retainer ring (8). Press the rear bearing (5) onto the primary shaft and secure with retainer ring (6). Press in the primary shaft into the flywheel housing and install retainer rings (4) and (3). Install a new seal ring (9).

NOTE! Carefully grease the seals before they are installed. Turn the seals the correct way when installing.

Fill the space marked "A" with water resistant bearing grease. Replace the plug (10) with a grease nipple. Use a grease gun and force grease out through the rear bearing (4). Install a new seal ring (1).

NOTE! Install it with the "opening" facing outwards.



248. Inspect the flywheel housing and replace defective parts. Use special tools part nos 884838-4, 884596-8 and 884359-1 to replace bearing and sealings. Stuff the bearing with water resistant grease, part no 1141509-8.

Disassemble, observing the following sequence:

Remove the sealing (1) and the locking rings (2). "Knock out" the shaft (3) along with the bearing (4) using a rubber mallet. Then remove the sealing (5) and then the locking ring (6). Then remove the bearing from the shaft by pressing it off.

Assemble, observing the following sequence:

Install the new, inner sealing (5) using special tool part no 884838-4. The sealing is installed with its "opening" facing outwards. Install the new bearing on the shaft. Use special tool part no 884596-8 and press the bearing onto the shaft. Install the locking ring (6). Fill up the space "A" between the sealing and the bearing shoulder with water resistant grease. Install the primary shaft in the flywheel housing. Use special tool part no 884596-8 and press the shaft into its location. Make sure that the locking ring (6) ends up in the machined "groove" of the tool. Install the locking rings (2). Fill up the space "B" with water resistant grease. Use special tool part no 884359-1 and install the new, outer sealing (1).

NOTE! The "opening" of the sealing should face outwards.