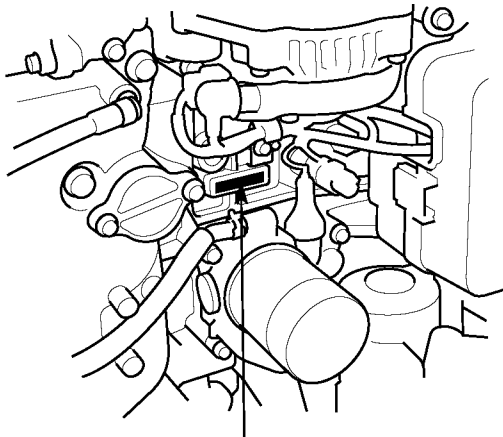


# 1. GENERAL INFORMATION

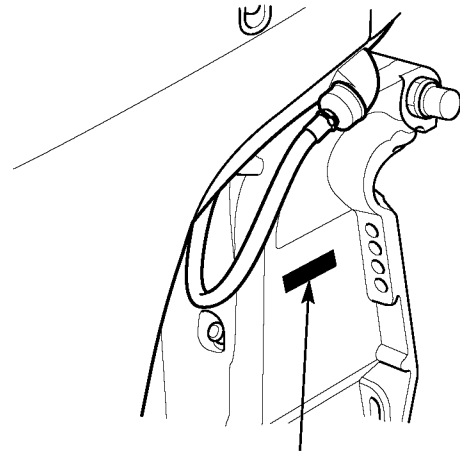
1. SERIAL NUMBER LOCATION ..... 1-1	3. DIMENSIONAL DRAWINGS ..... 1-4
2. SPECIFICATIONS ..... 1-1	

## 1. SERIAL NUMBER LOCATION

The engine serial number is stamped on the right side of the cylinder block and the product identification number is located on the right side of the stern bracket. Always specify these numbers when inquiring about the engine or when ordering parts in order to obtain the correct parts for the outboard motor being serviced.



ENGINE SERIAL NUMBER



PRODUCT IDENTIFICATION NUMBER

## 2. SPECIFICATIONS

### MODEL/TYPE DESCRIPTION

It may be necessary to refer to this chart for reference purposes when reading this manual.

Models	BF135A•BF150A		
Types	LA	XA	XCA
Shaft length type	L	XL	XL
Remote control	(O)	(O)	(O)
PGM-FI panel	(O)	(O)	(O)
Counter rotation			●
Power trim/tilt	●	●	●

L: Long shaft

XL: Extra-long shaft

(O): Optional part

●: Standard