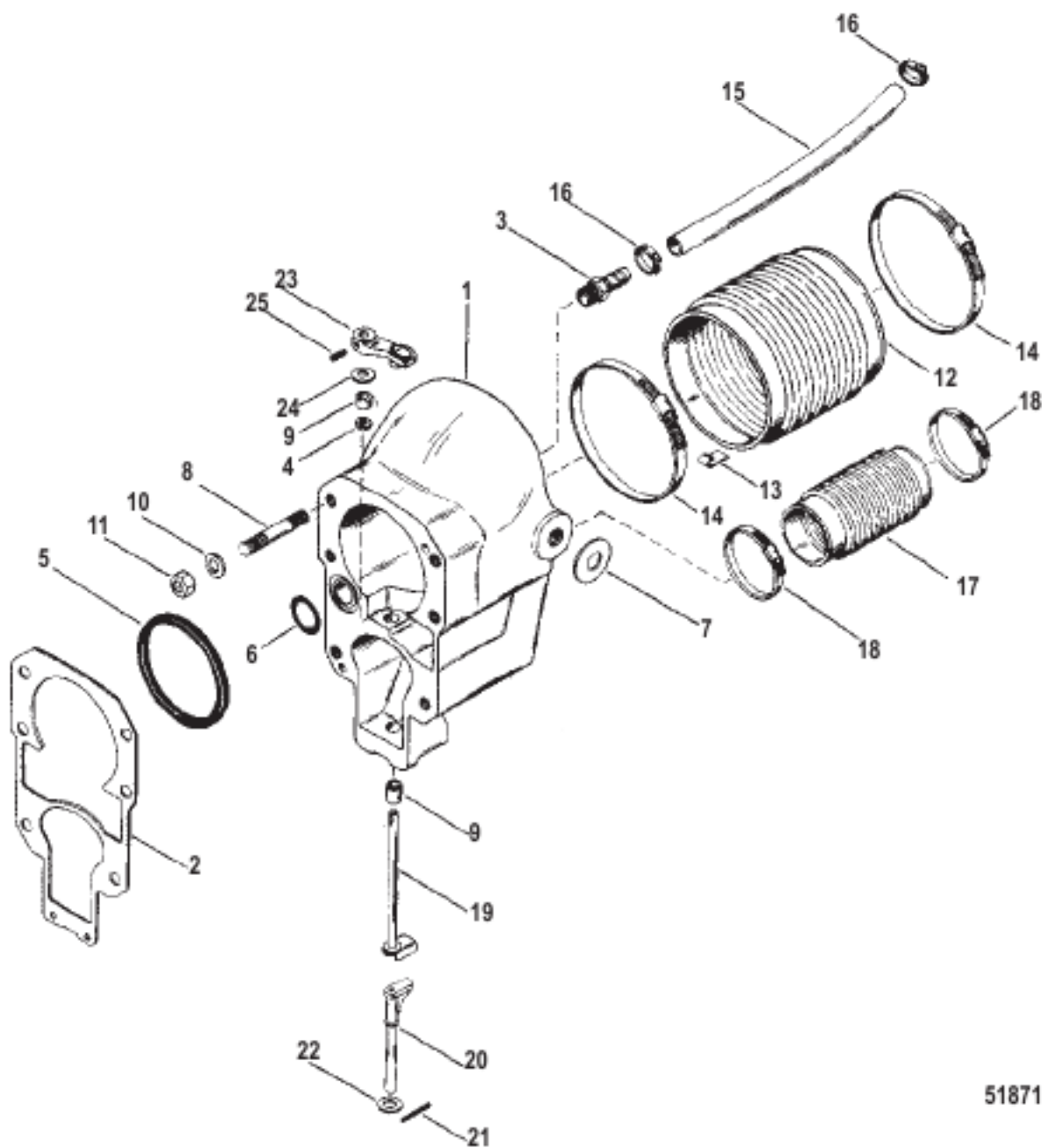


BELL HOUSING



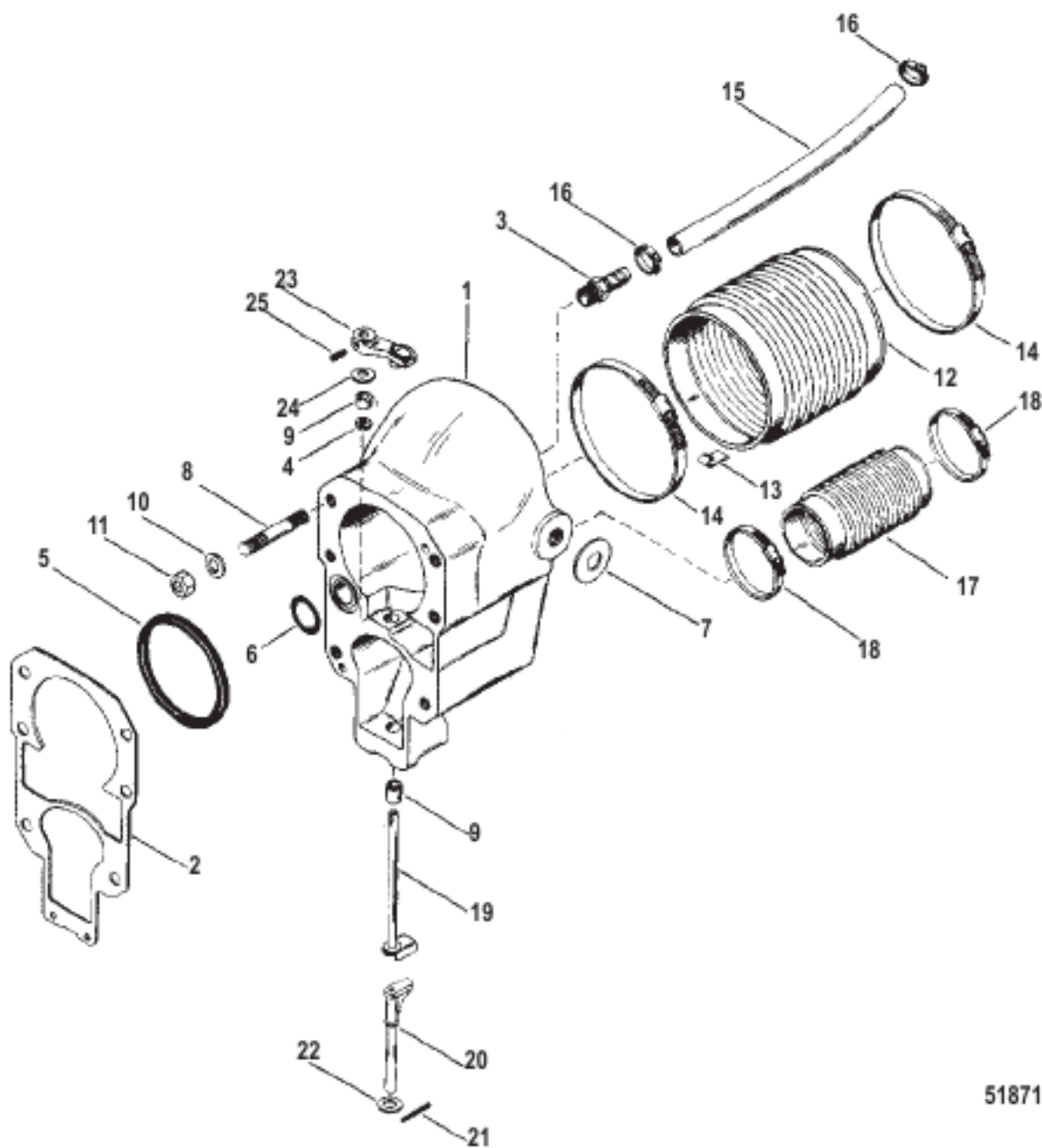
51871

BELL HOUSING

Ref #	Part Class	Part Number	Description	Comments	Qty	Note
1	0000	42815A6	BELL HOUSING ASSEMBLY (BLACK)		1	
2	0027	94996Q2	GASKET BELL HOUSING		1	
3	0022	33066	CONNECTOR (.500-14) Straight - Brass		1	
3	0022	44221	CONNECTOR (5/8 Inch HOSE - 3/4-14 THREAD)		1	
3	0022	42683	CONNECTOR (.750-14)		1	
4	0026	8164641	SEAL Oil BELL HOUSING		1	
5	0027	35982	GASKET Rubber Bell Housing		1	
6	0025	33504	O-RING BELL HOUSING		1	
7	0012	72498	WASHER Synthane Bell Housing		2	
8	0016	59579	STUD (.437-14/.437-20 x 2.812) BELL HOUSING TO DRIVE SHAFT HOUSING		6	
NS	0023	805041A2	BUSHING/SEAL KIT Oil BELL HOUSING (5/16 Inch)		1	
NS	0023	805041A2	BUSHING/SEAL KIT Oil BELLHOUSING (5/8 Inch)		1	
9	0023	814308	BUSHING		2	
10	0012	35935	WASHER (.435 x .875 x .105) Stainless Steel BELL HOUSING STUD		6	
11	0011	859116	NUT (.437-20) BELL HOUSING STUD		6	
12	0000	60932A4	BELLOWS ASSEMBLY UNIVERSAL JOINT		1	
13	0054	86049	CLIP Grounding BELLOWS		4	
14	0054	815504372	CLAMP Worm Gear UNIVERSAL JOINT BELLOWS		2	
15	0032	32461	HOSE WATER - 5/8 Inch Inside Diameter		1	
15	0032	4172533	HOSE WATER - 3/4 Inch Inside Diameter		1	
16	0054	815504412	CLAMP Worm Gear WATER HOSE		2	
17	0000	18654A1	BELLOWS ASSEMBLY EXHAUST		1	
17	0000	78458A1	TUBE (454 MAGNUM/JACKSHAFT MODELS)		1	
18	0054	815504348	CLAMP Worm Gear EXHAUST BELLOWS		2	
19	0000	45589A3	SHAFT ASSEMBLY SHIFT - UPPER		1	
20	0000	621041	SHIFT SHAFT INTERMEDIATE		1	
21	0018	32665	COTTER PIN INTERMEDIATE SHIFT SHAFT		1	
22	0012	32666	WASHER INTERMEDIATE SHIFT SHAFT		1	
23	0000	45518A3	LEVER ASSEMBLY UPPER SHIFT SHAFT		1	
24	0012	39116	WASHER UPPER SHIFT LEVER		1	
25	0010	45590	SCREW (.250-28) UPPER SHIFT LEVER (1-1/16 Inch)		1	

BELL HOUSING

BELL HOUSING



51871

BELL HOUSING

Ref #	Part Class	Part Number	Description	Comments	Qty	Note
-	0000	19543T1	CABLE KIT Shift		1	
-	0030	803097T1	SEAL KIT Transom (with Exhaust Bellow)		1	
-	0030	803098T1	SEAL KIT Transom (with Exhaust Tube)		1	
-	0043	803101T1	REPAIR KIT Gear - Upper Driveshaft	(1.98 Ratio)(20/24 Gear)	1	
-	0043	803112T1	REPAIR KIT Gear - Upper Driveshaft	(1.65 Ratio)(24/24 Gear)	1	
-	0043	803114T1	REPAIR KIT Gear - Upper Driveshaft	(1.84 Ratio)(17/19 Gear)	1	
-	0043	803115T1	REPAIR KIT Gear - Upper Driveshaft	(1.32 Ratio)(16/20 Gear)	1	
-	0043	803116T1	REPAIR KIT Gear - Upper Driveshaft	(1.50 Ratio)(20/22 Gear)	1	