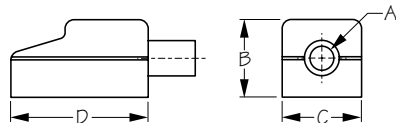




BATTERY TERMINAL COVERS

Injection Molded PVC



Made In USA

Bulk Part No.	Display Part No.	A	B	C	D	Cable Gauge	Colors In Pair	Weight	Std. Pack
n/a	415100-1	1/2"	1-5/8"	1-11/16"	2-7/8"	4, 2, 1	Red/Black	.30 lb	10 pr
415101	n/a	1/2"	1-5/8"	1-11/16"	2-7/8"	4, 2, 1	Red Only	.15	10 ea
415102	n/a	1/2"	1-5/8"	1-11/16"	2-7/8"	4, 2, 1	Black Only	.15	10 ea
n/a	415105-1	5/8"	1-5/8"	1-11/16"	2-7/8"	1/0, 2/0	Red/Black	.30	10 pr
415106	n/a	5/8"	1-5/8"	1-11/16"	2-7/8"	1/0, 2/0	Red Only	.15	10 ea
415107	n/a	5/8"	1-5/8"	1-11/16"	2-7/8"	1/0, 2/0	Black Only	.15	10 ea

Injection Molded in PVC. Satisfies U.S. Coast Guard requirements and American Boat and Yacht Council recommendations for prevention of accidental grounding of battery terminals. Will fit most marine batteries as well as automotive batteries using add on marine terminals.