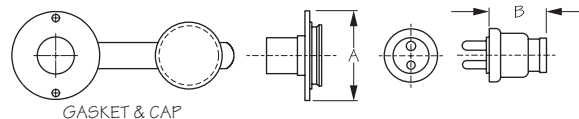




POLARIZED CABLE OUTLET 12-VOLT

Machined Brass/Chrome Plated



Bulk Part No.	Display Part No.	Pin	A	B	Weight	Std. Pack
426142	426142-1	2	1-7/16"	15/16"	.13 lb	10 ea
426143	426143-1	Deck Outlet & Cap Only	1-7/16"		.09	10 ea
426144	426144-1	Plug Only	n/a	15/16"	.03	10 ea
n/a	426149-1	Replacement Cap	n/a		.01	10 ea

As a safety feature, polarized pins are sized to be connected in only one way.