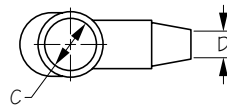
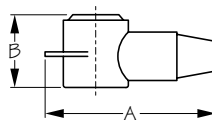




TERMINAL CAP

Injection Molded PVC



Made In USA

Bulk Part No.	Display Part No.	Cable Gauge	Wire Gauge	A	B	C	D	Weight	Std. Pack
415192	n/a		18-10	1-15/16"	7/8"	1/2"	1/8"	.01 lb	10 ea
n/a	415192-1		18-10	1-15/15"	7/8"	1/2"	1/8"	.02	10 pr
415194	n/a	8-2		2-3/16"	15/16"	11/16"	5/16"	.01	10 ea
n/a	415194-1	8-2		2-3/16"	15/16"	11/16"	5/16"	.02	10 pr
415196	415196-1	2-2/0		3-1/16"	1-3/8"	1"	9/16"	.03	10 ea
415198	415198-1	3/0-4/0		3-3/4"	1-11/16"	1-3/8"	3/4"	.07	10 ea

Injection Molded in PVC. Satisfies U.S. Coast Guard requirements and American Boat and Yacht Council recommendations for prevention of accidental grounding of battery terminals. May be used on uninsulated high amperage stud connections on chargers, inverters, starters, windlasses, solenoids and other high amperage equipment.