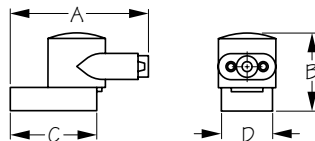




## ROTATING BATTERY TERMINAL COVERS

*Injection Molded PVC*



*Made In USA*

Bulk Part No.	Display Part No.	A	B	C	D	Cable Gauge	Colors	Weight	Std. Pack
n/a	415140-1	4-1/16"	2-3/8"	2-9/16"	1-1/2"	4, 2, 1	Red/Black	.20 lb	10 pr
415141	n/a	4-1/16"	2-3/8"	2-9/16"	1-1/2"	4, 2, 1	Red	.10	10 ea
415142	n/a	4-1/16"	2-3/8"	2-9/16"	1-1/2"	4, 2, 1	Black	.10	10 ea
n/a	415145-1	4-1/8"	2-3/8"	2-9/16"	1-1/2"	1/0, 2/0	Red/Black	.20	10 pr
415146	n/a	4-1/8"	2-3/8"	2-9/16"	1-1/2"	1/0, 2/0	Red	.10	10 ea
415147	n/a	4-1/8"	2-3/8"	2-9/16"	1-1/2"	1/0, 2/0	Black	.10	10 ea

Injection Molded in PVC. Satisfies U.S. Coast Guard requirements and American Boat and Yacht Council recommendations for prevention of accidental grounding of battery terminals. Made exclusively for integral marine terminals, the rotating top allows for versatility in the angle of the cable leads. This flexible positioning enables the cable to lead directly into the battery terminal without looping around to enter a boot in an awkward position.