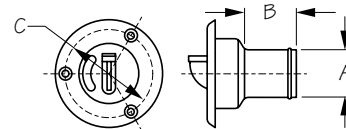




## DECK FILL WITH KEYLESS CAP

*Injection Molded Fiberglass Nylon*



*Made In USA*

Bulk Part No.	Display Part No.	Cap Marking	Cap Color	A	B	C	Fast-ener	Weight	Std. Pack
<b>Black Body</b>									
n/a	357000-1	None: Body Only		1-1/2" Hose	1-9/16"	2-3/4"	#10 FH	.14 lb	5 ea
357030	357030-1	Gas	Red	1-1/2" Hose	1-9/16"	2-3/4"	#10 FH	.22	1 ea
357031	357031-1	Diesel	Green	1-1/2" Hose	1-9/16"	2-3/4"	#10 FH	.22	1 ea
357032	357032-1	Oil	Black	1-1/2" Hose	1-9/16"	2-3/4"	#10 FH	.22	1 ea
357033	357033-1	Water	Blue	1-1/2" Hose	1-9/16"	2-3/4"	#10 FH	.22	1 ea
357034	357034-1	Waste	Black	1-1/2" Hose	1-9/16"	2-3/4"	#10 FH	.22	1 ea
<b>White Body</b>									
n/a	357002-1	None: Body Only		1-1/2" Hose	1-9/16"	2-3/4"	#10 FH	.14	5 ea
357020	357020-1	Gas	Red	1-1/2" Hose	1-9/16"	2-3/4"	#10 FH	.22	1 ea
357021	357021-1	Diesel	Green	1-1/2" Hose	1-9/16"	2-3/4"	#10 FH	.22	1 ea
357023	357023-1	Water	Blue	1-1/2" Hose	1-9/16"	2-3/4"	#10 FH	.22	1 ea
357024	357024-1	Waste	Black	1-1/2" Hose	1-9/16"	2-3/4"	#10 FH	.22	1 ea
<b>Replacement Caps</b>									
n/a	357090-1	Gas	Red					.08	5 ea
n/a	357091-1	Diesel	Green					.08	5 ea
n/a	357092-1	Oil	Black					.08	5 ea
n/a	357093-1	Water	Blue					.08	5 ea
n/a	357094-1	Waste	Black					.08	5 ea



The Sea-Dog Keyless Fills are entirely molded from Fiberglass Filled Nylon and do not require grounding to the boat electrical system as required on all deck fills using metal components. Each deck fill has a special cap with a built-in key for easy cap removal. The hinged key can be locked in the upright position to open or close the fill and then recessed into the cap for a flush surface. In addition the caps are molded in special colors to help prevent the dangerous and costly problems caused by placing fuel in water or waste tanks or vice-versa. Available in custom colors for large volume orders. The cap threads are 1-1/4" - 11-1/2 NPSM - Straight. Gas, diesel and water caps include attachment chains. Black caps with all markings are available through special order. Note: Will not work with pressurized oil injection systems. Connect deck fill to reservoir via hose (not included).