



Assembly Instructions for: 31600 Motor Carrier

Form 12.121

TOOLS Required:
Hammer

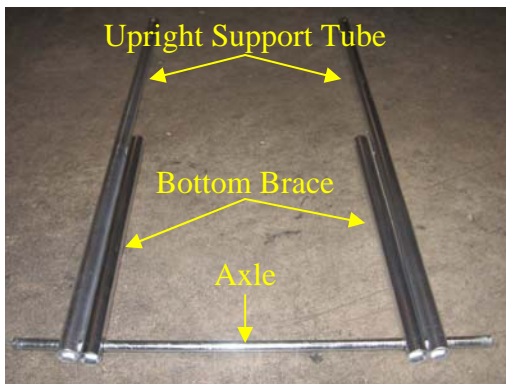
Page 1

CAUTION: Tubing will crush if over-tightened.

Step 1: Motor Carrier Assembly

A. Slide bottom braces on axle using large holes as shown.

B. Slide Upright support tube on axle using large holes as shown.



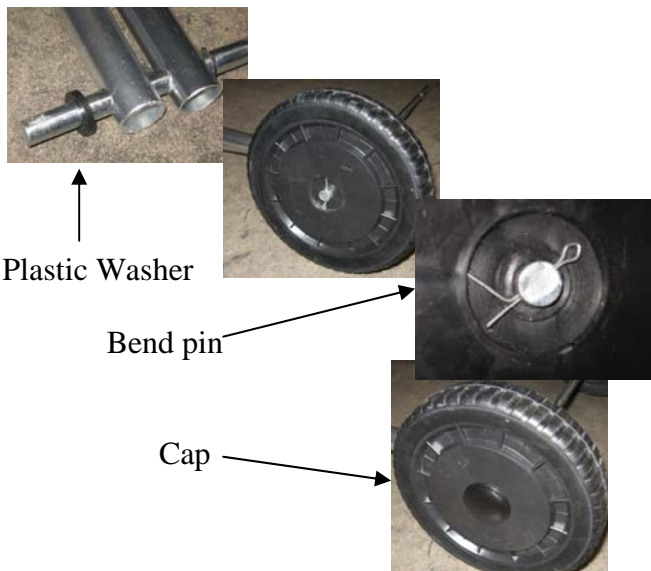
Step 2:

A. Place plastic washer on axle.

B. Place wheel on axle as shown.

C. Secure with pin. ****Bend pin to secure in place****

D. Place caps on wheels. Gently tap into place with hammer.



Step 3:

Place tank tie straps on upright supports as shown.



Step 4:

Attach plastic block to each end of upright support by aligning holes. Insert 4 bolts (2 7/8" long) and tighten fasteners.

NOTE: Top of block should be even with ends of upright tubes as shown.

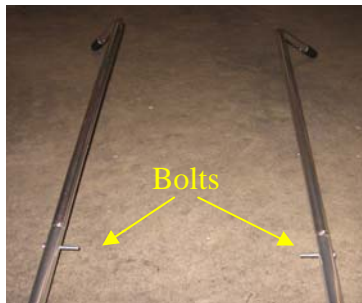




Step 5: Handle Assembly

Insert handles into short bottom U tube.
Align holes in assembly so that the handles will
point AWAY from each other and insert bolts.

NOTE: DO NOT add fasteners yet.

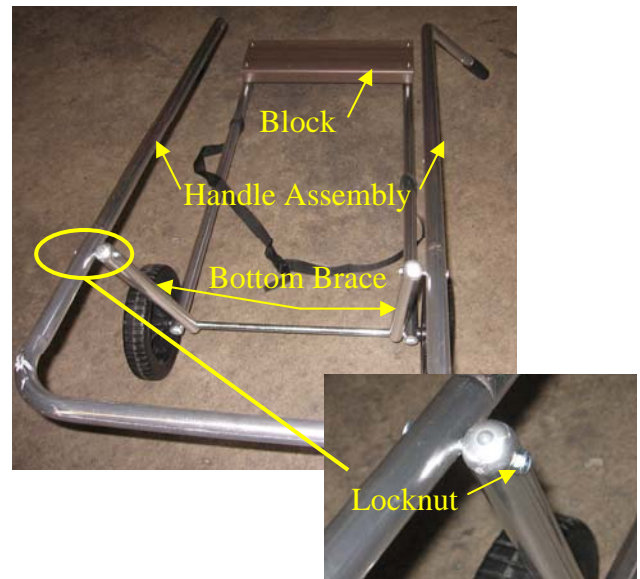


NOTE: Rigidity of cart is obtained through the following assemblies; some force will be needed to align certain holes.

Step 6:

Slide handles assembly into upright support assembly.
Insert bolts in bottom brace and finger tighten
fasteners.

NOTE: Handles will rest on outsides of upright support
tubes. Make sure plastic block is facing up as shown.



Step 7:

Align holes to fasten handles to upright support. (May
need to turn assembly "up-side-down")
Insert bolt and finger tighten fasteners.





Assembly Instructions for: 31600 Motor Carrier

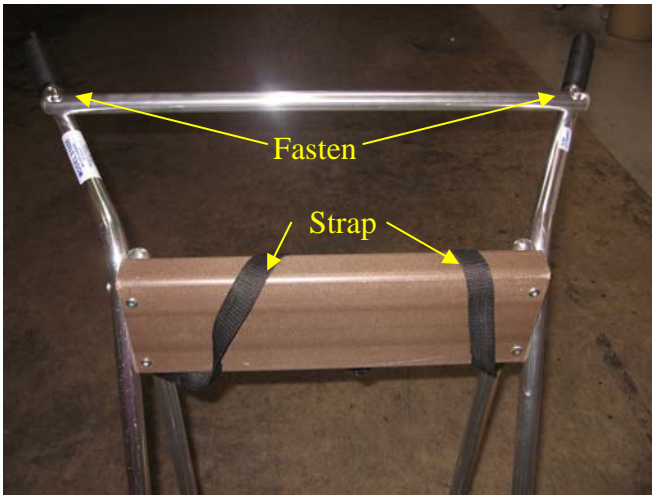
Form 12.121

Page 3

Step 8:

Attach handle brace (tube with rounded ends) across top. Insert bolts and finger tighten fasteners.

Drape tank tie straps over wood block so loops are above holes.

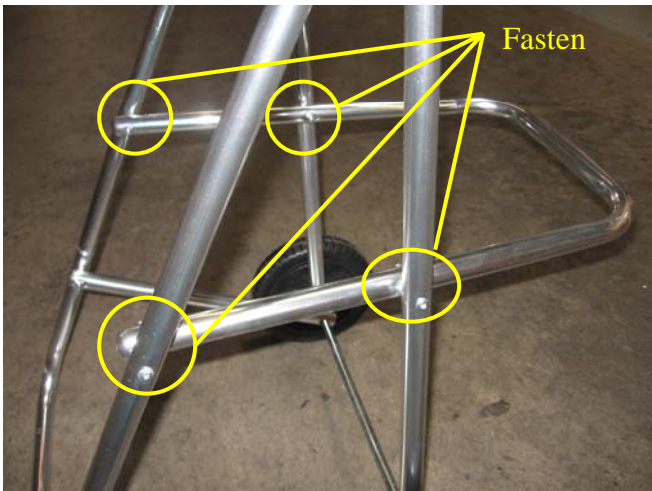


Step 9:

Position tank holder U tube as shown.

NOTE: Place tank holder on inside of main upright tube. U opens out facing forward.

Insert bolts and finger tighten fasteners.



*****Step 10: Tighten all fasteners on carrier.*****

Finished Assembly:



Maintenance:

Periodically lubricate wheels and polish** aluminum to ensure a long life.

NOTE: Recommended for motors 1-30 h.p./130 lbs.

**EEz-In marine polish, Model 65010, available.