



## REMOTE CONTROL CONVERSION KIT, P/N 5036662 INSTALLATION INSTRUCTIONS

### APPLICATION

This kit is designed for use on **2005 (SO) and newer Johnson® 9.9 and 15 HP (302 cc) 4-Stroke outboards**. DO NOT install on any other models.

### SAFETY INFORMATION

For safety reasons, this kit should be installed by an authorized *Evinrude®/Johnson®* dealer. This instruction sheet is not a substitute for work experience. Additional helpful information may be found in other service literature for your engine.

This instruction sheet uses the following signal words identifying important safety messages.



#### DANGER



Indicates an imminently hazardous situation which, if not avoided, **WILL** result in death or serious injury.



#### WARNING



Indicates a potentially hazardous situation which, if not avoided, **CAN** result in severe injury or death.



#### CAUTION



Indicates a potentially hazardous situation which, if not avoided, **MAY** result in minor or moderate personal injury or property damage. It also may be used to alert against unsafe practices.

**IMPORTANT:** Identifies information that will help prevent damage to machinery and appears next to information that controls correct assembly and operation of the product.

These safety alert signal words mean:

**ATTENTION!**  
**BECOME ALERT!**  
**YOUR SAFETY IS INVOLVED!**

Always follow common shop safety practices. If you have not had training related to common shop safety practices, you should do so to protect yourself, as well as the people around you.

It is understood that this instruction sheet may be translated into other languages. In the event of any discrepancy, the English version shall prevail.

DO NOT do any repairs until you have read the instructions and checked the pictures relating to the repairs.

Be careful, and never rush or guess a service procedure. Human error is caused by many factors: carelessness, fatigue, overload, preoccupation, unfamiliarity with the product, and drugs and alcohol use, to name a few. Damage to a boat and outboard can be fixed in a short period of time, but injury or death has a lasting effect.

When replacement parts are required, use *Evinrude/Johnson Genuine Parts* or parts with equivalent characteristics, including type, strength and material. Using substandard parts could result in injury or product malfunction.

Torque wrench tightening specifications must be strictly followed. Replace any locking fastener (locknut or patch screw) if its locking feature becomes weak. Definite resistance to turning must be felt when reusing a locking fastener. If replacement is specified or required because the locking fastener has become weak, use only authorized *Evinrude/Johnson Genuine Parts*.

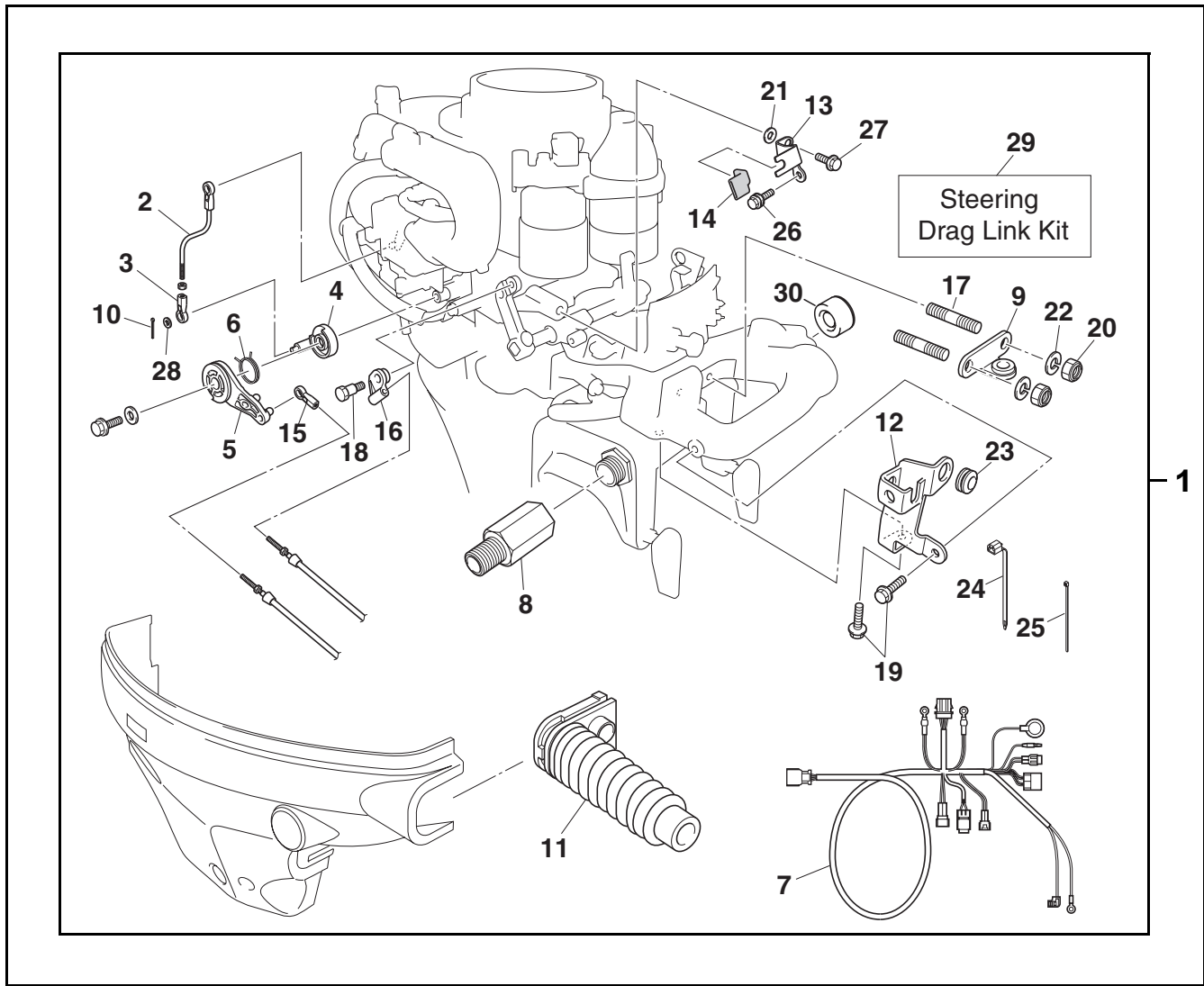
If you use procedures or service tools that are not recommended in this instruction sheet, **YOU ALONE** must decide if your actions might injure people or damage the outboard.

**TO THE INSTALLER:** Give this sheet to the owner. Advise the owner of any special operation or maintenance information contained in the instructions.

**TO THE OWNER:** Save these instructions in your owner's kit. This sheet contains information important to the future use and maintenance of your engine.



REMOTE CONTROL CONVERSION KIT  
9.9 / 15 (302 cc) 4-Stroke 2005 MY and NEWER



004923

REMOTE CONTROL CONV KIT  
9.9/15 4-Stroke 2005 and newer

Ref	P/N	Name of Part	Qty	Ref	P/N	Name of Part	Qty
1	5036662	REMOTE CONTROL CONVERSION KIT	1	16	5034077	* CONNECTOR, SHIFT CABLE	1
2	5036207	*ROD COMPLETE, THROTTLE	1	17	5035816	*STUD, STEERING BRACKET	2
3	5036236	**CONNECTOR, THROTTLE ROD	1	18	5031817	*BOLT, SHIFT CONTROL LEVER	1
4	5036235	*LEVER, THROTTLE CONTROL	1	19	5030035	*BOLT, SHIFT CABLE BRACKET	2
5	5033129	*DRUM, THROTTLE	1	20	5034395	*NUT, STEERING BRACKET	2
6	5033130	*SPRING, THROTTLE LEVER	1	21	5036539	*SPACER, THR CABLE BRACKET A	1
7	5036281	*HARNESS AY, WIRING	1	22	5030069	*LOCK WASHER, STEERING BRKT	2
8	5033163	*ATTACHMENT, STEERING CABLE	1	23	5033017	*GROMMET, SHIFT CABLE	1
9	5036297	*ATTACHMENT, STEERING BRACKET	1	24	5034244	*CLAMP, TIE STRAP	2
10	5035590	*COTTER PIN, LEVER LOCK ARM	1	25	5035788	*CLAMP, TIE STRAP	2
11	5036346	*GROMMET, SIDE COVER	1	26	5030989	*BOLT, THROTTLE CABLE BRKT	1
12	5036536	* BRACKET, SHIFT CABLE	1	27	5030993	*BOLT, THROTTLE CABLE BRKT	1
13	5036537	* BRACKET, THROTTLE CABLE	1	28	5030023	*WASHER, THROTTLE ROD	1
14	5036664	*CUSHION, THROTTLE CABLE BRKT	1	29	5033228	*STEERING DRAG LINK KIT	1
15	5030375	*CONNECTOR, THROTTLE CABLE	1	30	5030840	*SEAL, STEERING CABLE	1

A Manual start models only

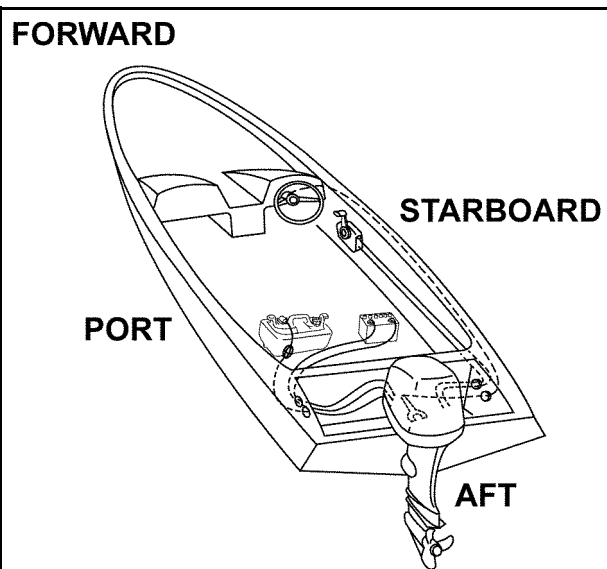
**! WARNING !**

Improper installation of this kit could result in personal injury due to loss of boat control.

A boat designed for remote steering might have a lower maximum rated horsepower for a tiller-steered outboard than shown on the certification plate. To avoid overpowering a boat designed and rated for remote steering, contact boat manufacturer for tiller-steered maximum rated horsepower.

To prevent accidental starting while servicing, disconnect battery leads from battery. Twist and remove all spark plug leads.

To prevent injury from contact with a rotating propeller, remove propeller before servicing and when running outboard on a flushing device.



Nautical Orientation

## REMOTE CONTROL SELECTION

Before performing these procedures, be sure that the throttle and shift cables are installed in the remote control box according to the remote control manufacturer's instructions.

Remote control styles and applications are described in the *Evinrude/Johnson Genuine Parts and Accessories Catalog*. Plan the installation of all remote controls carefully. Read the outboard's Operator's Guide and the remote control's installation instructions prior to installation.

The remote control used must have the following features:

- Shift stroke must conform to the outboard's specifications, 1.125 to 1.330 in. (28.6 to 33.8 mm) measured between NEUTRAL and FORWARD.

**IMPORTANT:** The remote control cables must have an SAE fitting on the output (engine) end. Refer to the *Evinrude/Johnson Genuine Parts and Accessories Catalog* for stern drive (SAE output end) cable applications.

## INSPECTION

Before installation, check boat for obstructions that could interfere with free movement of outboard, remote control cables, and steering components when steering or tilting outboard.

**! CAUTION !**

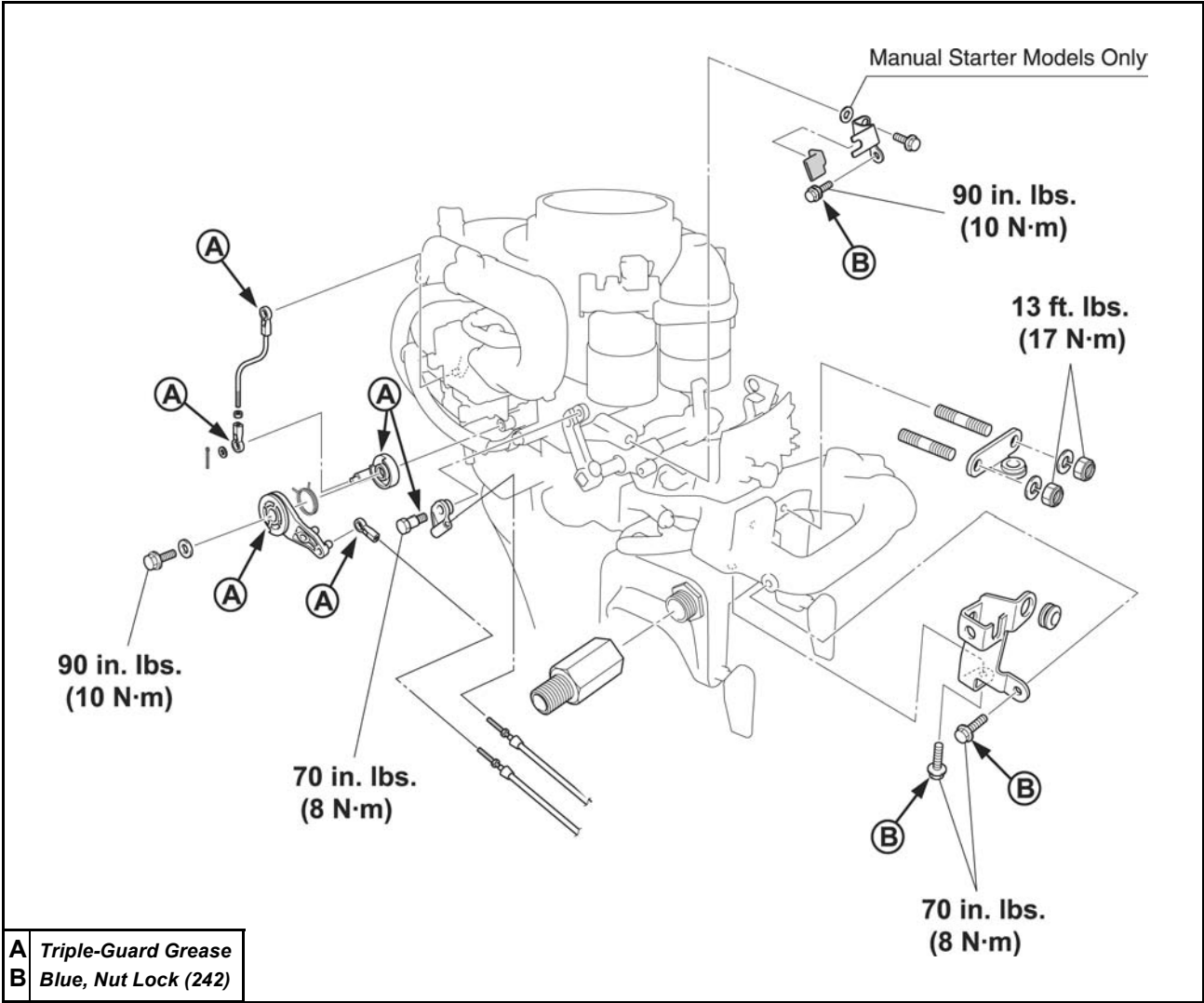
To avoid damaging cables when tilting the outboard up, position the outboard to clear obstacles in the motor well and boat.

**IMPORTANT:** Prior to starting installation, perform the following:

- Stop the engine.
- Disconnect spark plug wires from spark plugs.
- Make sure the engine is sufficiently cooled.

INSTALLATION

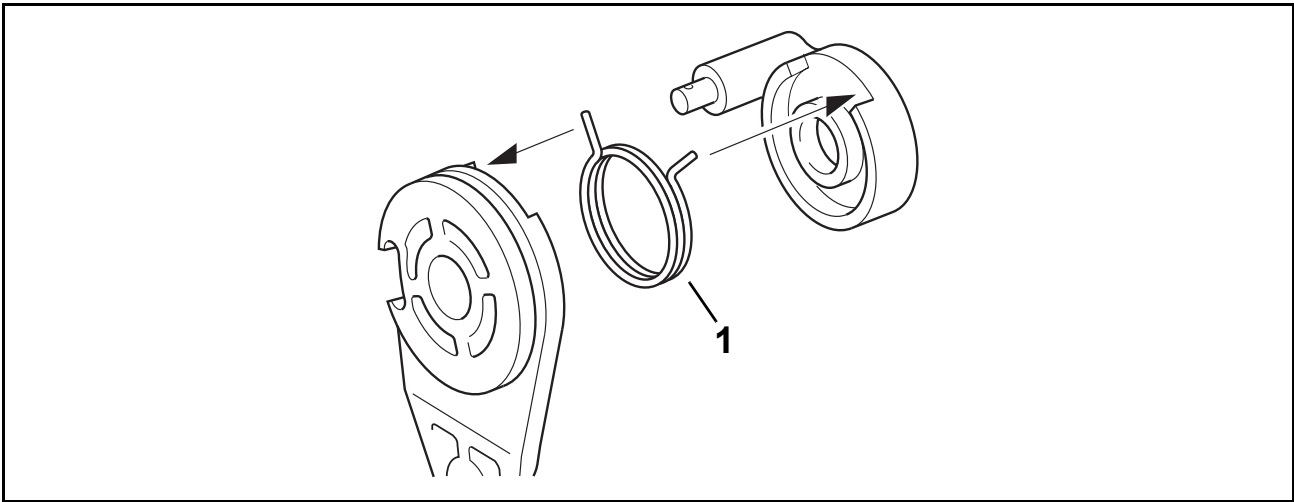
Apply Triple-Guard® Grease or Nut Lock™ to components as indicated.



004924

THROTTLE DRUM ASSEMBLY

Install throttle lever spring as shown in diagram below when assembling throttle drum.

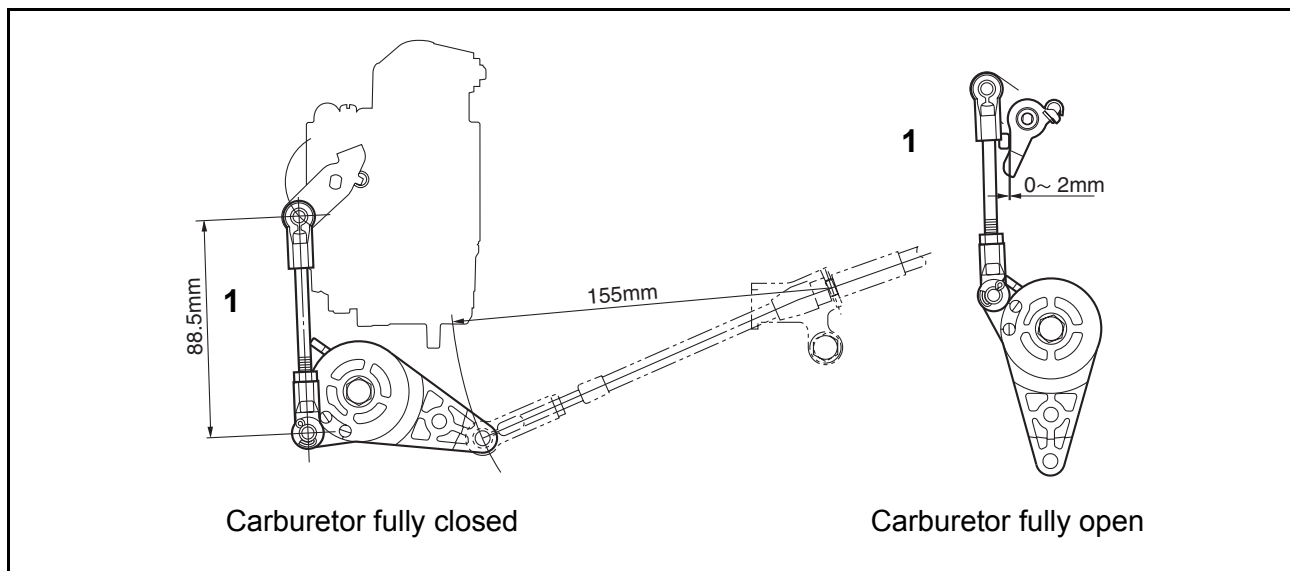


1. Spring, throttle lever

004925

## THROTTLE ROD ADJUSTMENT

Install throttle rod and adjust to dimensions shown in diagram below.

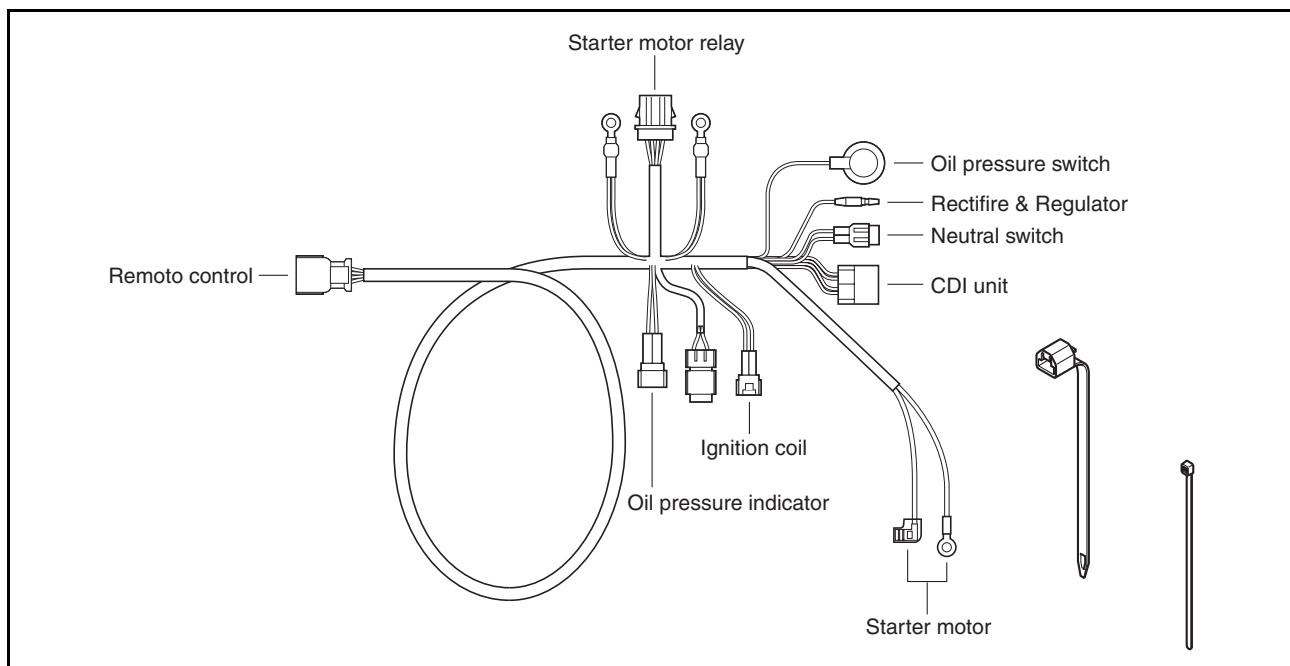


1. Throttle rod

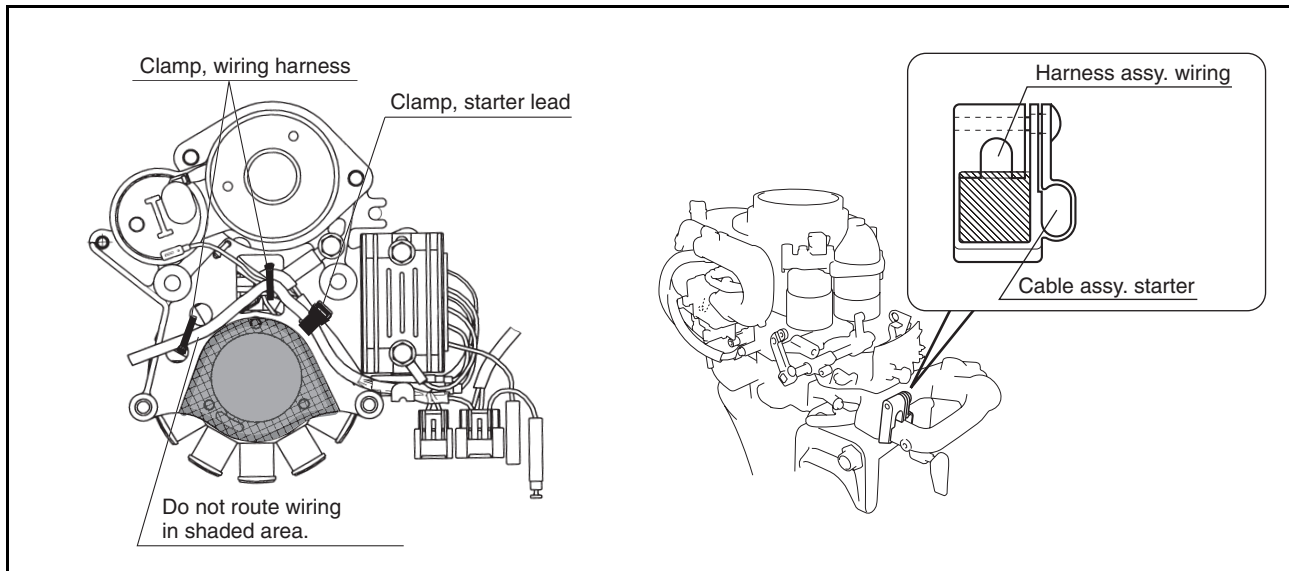
004929

## WIRE HARNESS

Install wire harness. Use tie straps provided to clamp wires as shown. Route wiring as show to prevent any interference.



004928



004926  
004927



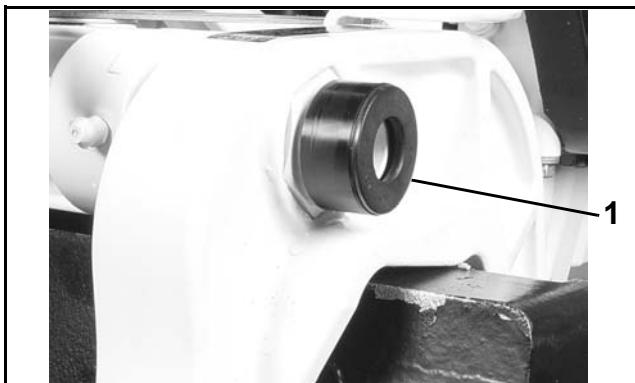
## CAUTION



**Route and clamp wires to prevent interference with flywheel. Damage to wiring could result in loss of operator control.**

## STEERING

Install steering cable seal on port side of steering tube threads.



1. Seal, steering cable

003891

Install drag link assembly. Follow instructions provided with drag link assembly.

Install remote controls, cables and wiring as described in installation instructions provided with those components.

## CHECK INSTALLATION

Make sure the following operate properly before returning outboard to customer:

- Engine stop circuit
- Emergency stop switch and lanyard
- Steering movement and friction control
- Throttle control (IDLE to WIDE OPEN)
- Shift control and proper gear engagement
- Start-in-gear protection (on engine)



### WARNING



**To avoid loss of engine control, thoroughly test the starting, shifting, throttle and steering functions before delivering the boat and outboard to your customer.**



### WARNING



**Only shift outboard with throttle in IDLE position. If outboard is shifted into gear with throttle setting above IDLE speed, the boat could accelerate suddenly, injuring boat occupants and bystanders.**

## INSTRUCTIONS FOR CUSTOMER

Perform periodic maintenance. Apply *Triple-Guard Grease* to all moving parts including throttle cable, throttle lever, and throttle drum.

Use choke lever when starting outboard.