



EVINRUDE[®]
Johnson[®]




INSTALLATION INSTRUCTIONS

Detune Kit P/N 5031735

SAFETY

These installation instructions contain information that can help prevent personal injury and damage to equipment. Understand the following symbols before proceeding:

 Safety Warning	Alerts you to the possibility of danger and identifies information that will help prevent injuries.
Note	Identifies information that will help prevent damage to machinery.
Important	Appears next to information that controls correct assembly and operation of the product.

TO THE OWNER

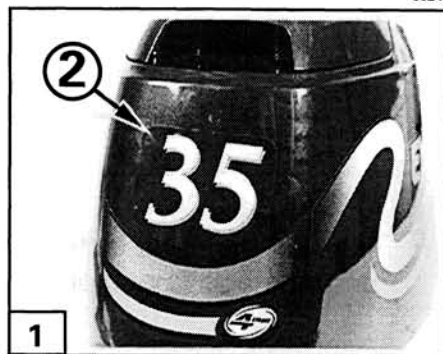
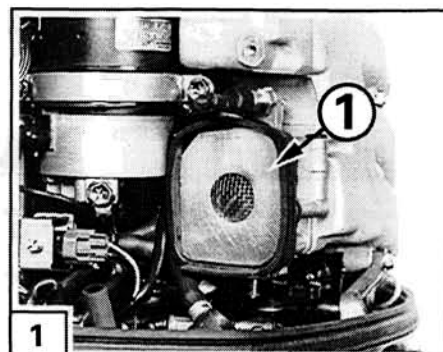
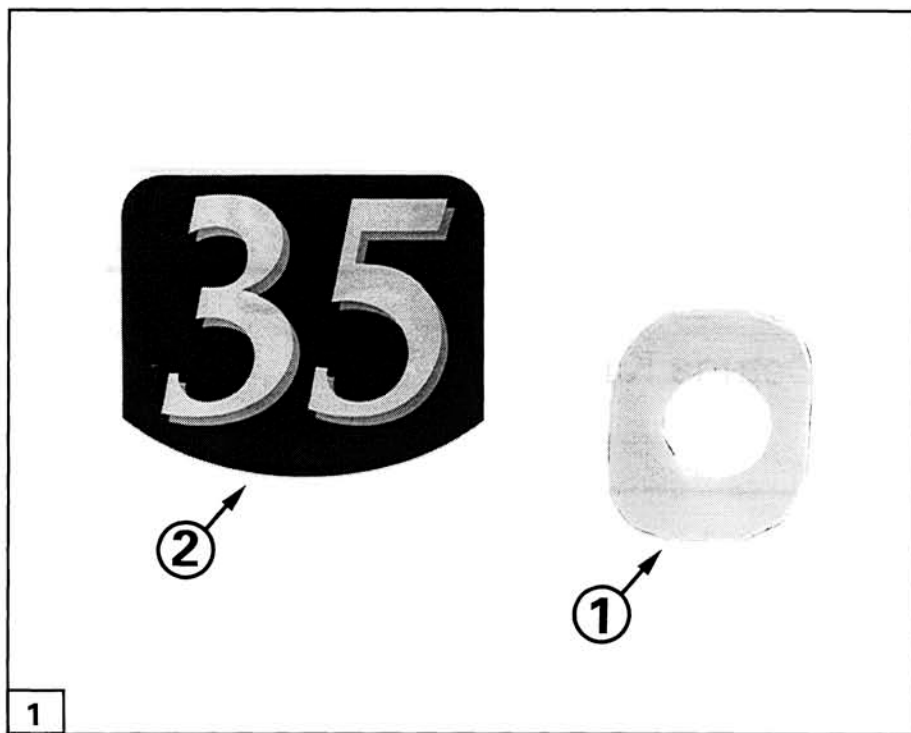
The assembly procedures outlined in this sheet should be performed by a skilled technician. If you have questions, see your DEALER. Save these instructions in your owners kit. This sheet contains information important to the future use and maintenance of your engine.

TO THE INSTALLER

Give this sheet to the owner. Advise the owner of any special operation or maintenance information contained in the instructions.

PREFACE

This kit is solely designed to reduce the horsepower of an Evinrude model E40PL4E to 35 HP. This kit meets the Kenai River Regulations AAC20.860.



⚠ An outboard equipped with this kit must be installed on boats that are rated for 40 horsepower motors and above. This motor is in all respects considered a 40 HP by BRP. The owner should advise any future buyer of this engine that it is a derated forty horsepower outboard.

1 Contents of Kit

Ref.	P/N	Name of Part	Qty.
1	5031733	Plate	1
2	5031732	Decal	1

Remove the air silencer per service manual procedures.

2 Install plate ① into the rubber throttle body seal along side the screen.

Reinstall the air silencer per service manual procedures.

3 Install decal ② onto the rear of the engine cover over the existing decal.

⚠ Safety Related