



## WATER PUMP KIT, P/N 5007556 INSTALLATION INSTRUCTIONS

### APPLICATION

Use this instruction sheet when installing the above water pump kit on **Evinrude® 115 and 130 HP outboard models, 2009 and newer.**

### SAFETY INFORMATION

For safety reasons, this kit should be installed by an authorized *Evinrude®/Johnson®* dealer. This instruction sheet is not a substitute for work experience. Additional helpful information may be found in other service literature for your engine.

This instruction sheet uses the following signal words identifying important safety messages.



#### DANGER



Indicates an imminently hazardous situation which, if not avoided, **WILL** result in death or serious injury.



#### WARNING



Indicates a potentially hazardous situation which, if not avoided, **CAN** result in severe injury or death.



#### CAUTION



Indicates a potentially hazardous situation which, if not avoided, **MAY** result in minor or moderate personal injury or property damage. It also may be used to alert against unsafe practices.

**IMPORTANT:** Identifies information that will help prevent damage to machinery and appears next to information that controls correct assembly and operation of the product.

These safety alert signal words mean:

**ATTENTION!  
BECOME ALERT!  
YOUR SAFETY IS INVOLVED!**

Always follow common shop safety practices. If you have not had training related to common shop

safety practices, you should do so to protect yourself, as well as the people around you.

It is understood that this instruction sheet may be translated into other languages. In the event of any discrepancy, the English version shall prevail.

**DO NOT** do any repairs until you have read the instructions and checked the pictures relating to the repairs.

Be careful, and never rush or guess a service procedure. Human error is caused by many factors: carelessness, fatigue, overload, preoccupation, unfamiliarity with the product, and drugs and alcohol use, to name a few. Damage to a boat and outboard can be fixed in a short period of time, but injury or death has a lasting effect.

When replacement parts are required, use *Evinrude/Johnson Genuine Parts* or parts with equivalent characteristics, including type, strength and material. Using substandard parts could result in injury or product malfunction.

Torque wrench tightening specifications must be strictly followed. Replace any locking fastener (locknut or patch screw) if its locking feature becomes weak. Definite resistance to turning must be felt when reusing a locking fastener. If replacement is specified or required because the locking fastener has become weak, use only authorized *Evinrude/Johnson Genuine Parts*.

If you use procedures or service tools that are not recommended in this instruction sheet, **YOU ALONE** must decide if your actions might injure people or damage the outboard.

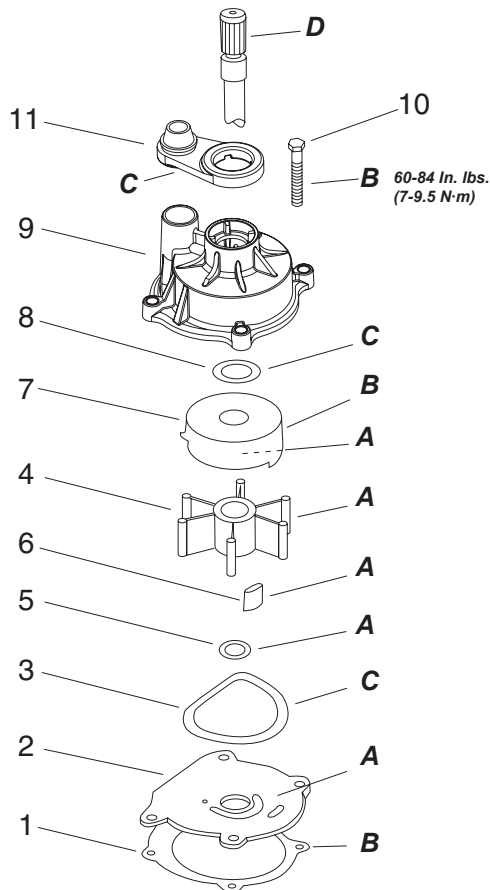
**TO THE INSTALLER:** Give this sheet and the operating instructions to the owner. Advise the owner of any special operation or maintenance information contained in the instructions.

**TO THE OWNER:** Save these instructions in your owner's kit. This sheet contains information important to the use and maintenance of your engine.



# WATER PUMP KITS (Evinrude 115 – 130 HP)

007171

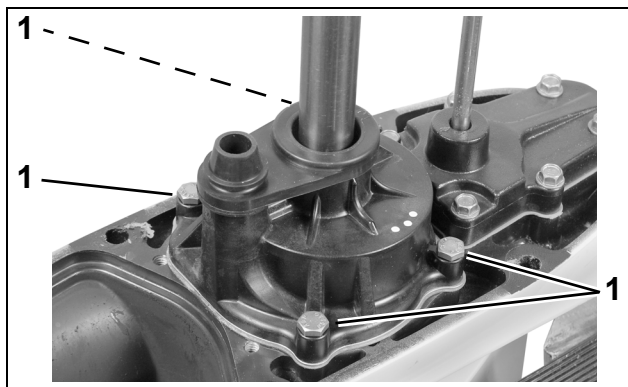


Ref	P/N	Name of Part	Qty
-	5007556	WATER PUMP REPAIR KIT	1
1	338484	*GASKET, Impeller plate	1
2	338485	*PLATE, Impeller hsg-(Stainless)	1
3	331353	*SEAL, Impeller housing	1
4	5001593	*IMPELLER Assy	1
5	302035	**O-RING, Impeller to plate	1
6	331107	**KEY, Impeller	1
7	338486	*CUP, Impeller-(Stainless)	1
8	331188	*O-RING, Cup to housing	1
9	5007554	*IMPELLER HOUSING	1
10	302325	*SCREW, Impeller housing	4
11	353690	*GROMMET, Pump to exh housing	1

- A Triple-Guard Grease
- B Gasket Sealing Compound
- C Adhesive 847
- D Moly Lube

## DISASSEMBLY

Rotate the driveshaft counterclockwise to unlock the impeller key. Remove the four impeller housing screws.

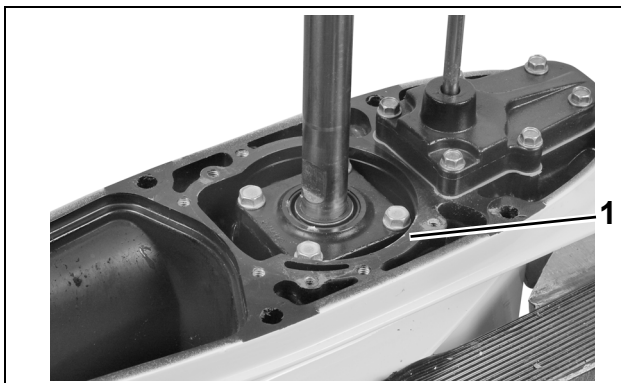


1. Screws

007173

Slide the water pump off the driveshaft. Remove the impeller key, O-ring, impeller plate, and gasket.

Make sure gasket surface is clean and smooth.



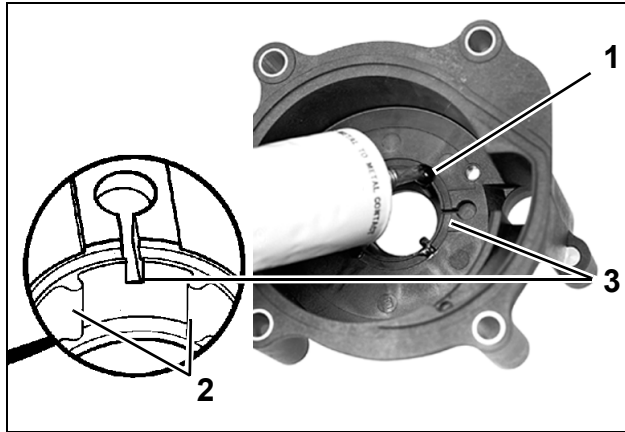
1. Gasket surface

007174

## ASSEMBLY

Apply a drop of *Adhesive 847* in the seal ring groove at each of the four ribs.

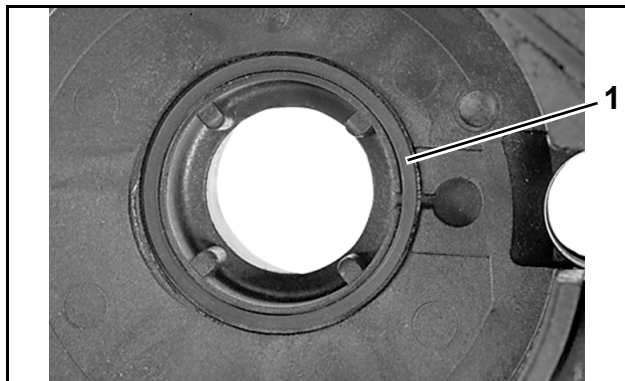
**IMPORTANT:** Do not allow any adhesive to get into the air bleed groove in the impeller housing. If this groove is blocked by adhesive, the pump will lose its prime and will not pump water.



1. Seal ring groove
2. Ribs
3. Air bleed groove

2311  
DR1185

Install the O-ring in impeller housing groove.



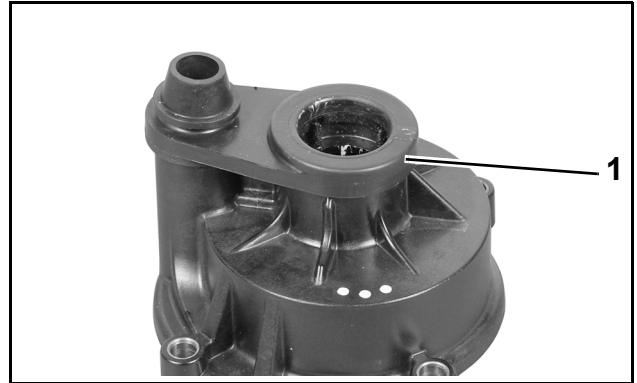
1. O-ring

34814

Lightly coat the exterior of the impeller cup with *Gasket Sealing Compound*. Install the cup in the impeller housing.

Make sure vent hole in impeller cup is open.

Apply *Adhesive 847* to flat side of the impeller housing grommet. Install the grommet, flat side down.

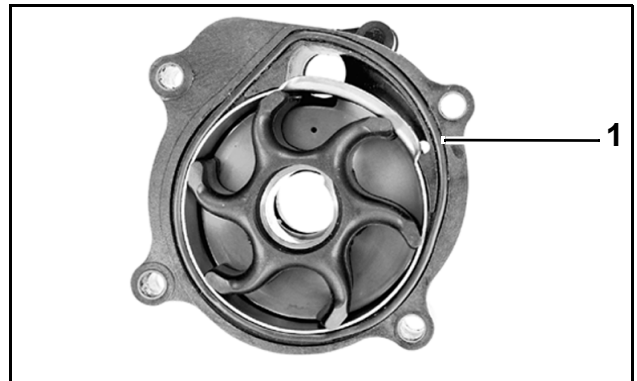


1. Impeller housing grommet

007175

Lightly coat the liner with *Triple-Guard* grease. With a counterclockwise rotation, install the impeller into the liner with slot for impeller key facing out.

Apply a thin bead of *Adhesive 847* in the seal groove, and install the special shaped O-ring seal.

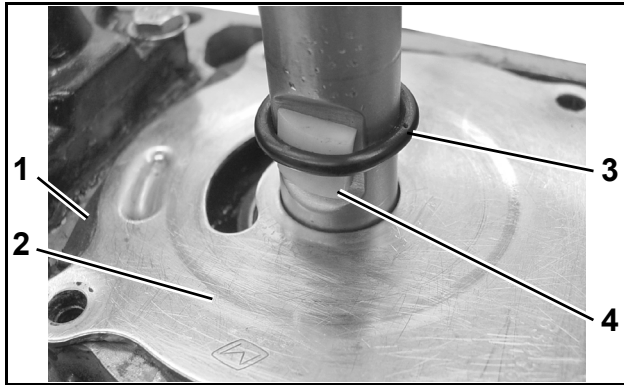


1. O-ring

34815

Apply *Gasket Sealing Compound* to both sides of a new impeller plate gasket. Install the gasket and impeller plate.

Apply *Triple-Guard* grease to a new impeller O-ring. Slide the O-ring down the driveshaft and half way over installed impeller key to temporarily hold key in place.

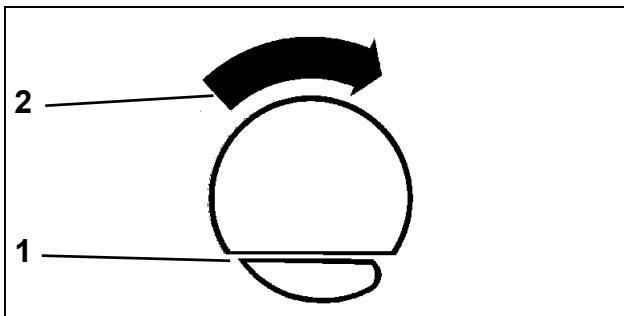


1. Impeller plate gasket  
2. Impeller plate  
3. O-ring  
4. Impeller key

006871

The sharp edge of the key is the leading edge in clockwise rotation.

Slide the water pump down the driveshaft. Align impeller slot with the impeller key. Rotate the driveshaft to engage the key with the impeller, and slide water pump down over key. Be sure impeller key does not fall out of position.



1. Sharp edge of drive cam  
2. Direction of driveshaft rotation

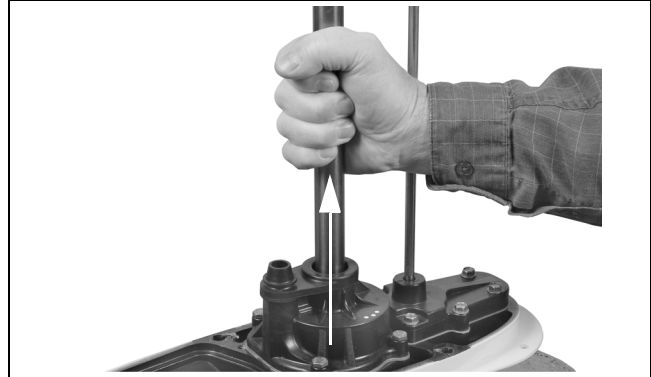
CO2995

**IMPORTANT:** Make sure the impeller engages the impeller key. Serious powerhead damage will result if impeller key is not in place.

Align the impeller housing with the gearcase. Apply *Gasket Sealing Compound* to threads of the four impeller housing screws. Tighten the screws to a torque of 60 to 84 in. lbs. (7 to 9.5 N·m).

After water pump is assembled completely, rotate driveshaft counter clockwise 1/4 turn to unlock and release impeller and key from driveshaft.

Next, pull up on driveshaft and turn clockwise to lock impeller to shaft. This process increases pump efficiency by locking the impeller in a lower position on the driveshaft.



007176

**IMPORTANT:** Before installing gearcase, shift rod adjustment **MUST** be checked. Refer to appropriate **Service Manual**.

Install gearcase assembly on outboard. Refer to appropriate **Service Manual**. Tighten gearcase mounting screws to a torque of:

- 3/8 in. screws – 26 to 28 ft. lbs. (35 to 38 N·m)
- 7/16 in. screws – 45 to 50 ft. lbs. (61 to 68 N·m)

**WARNING**

Failure to properly tighten all gearcase retaining screws can result in gearcase loss and loss of boat control at high speed.

Start outboard to check water pump operation.