

INSTALLATION INSTRUCTIONS

PRIMER PUMP KIT

APPLICATION

This instruction sheet is a guide for proper installation of components supplied in this kit. These components are designed for use on *Evinrude* and *Johnson* outboards. Refer to service manual and installation guides for additional assembly information.

SAFETY INFORMATION

For safety reasons, this kit should be installed by an authorized *Evinrude*[®]/*Johnson*[®] dealer. This instruction sheet is not a substitute for work experience. Additional helpful information may be found in other service literature for your engine.

This instruction sheet uses the following signal words identifying important safety messages.



DANGER



Indicates an imminently hazardous situation which, if not avoided, WILL result in death or serious injury.



WARNING



Indicates a potentially hazardous situation which, if not avoided, CAN result in severe injury or death.



CAUTION



Indicates a potentially hazardous situation which, if not avoided, MAY result in minor or moderate personal injury or property damage. It also may be used to alert against unsafe practices.

IMPORTANT: Identifies information that will help prevent damage to machinery and appears next to information that controls correct assembly and operation of the product.

These safety alert signal words mean:

ATTENTION!
BECOME ALERT!
YOUR SAFETY IS INVOLVED!

Always follow common shop safety practices. If you have not had training related to common shop safety practices, you should do so to protect yourself, as well as the people around you.

It is understood that this instruction sheet may be translated into other languages. In the event of any discrepancy, the English version shall prevail.

DO NOT do any repairs until you have read the instructions and checked the pictures relating to the repairs.

Be careful, and never rush or guess a service procedure. Human error is caused by many factors: carelessness, fatigue, overload, preoccupation, unfamiliarity with the product, and drugs and alcohol use, to name a few. Damage to a boat and outboard can be fixed in a short period of time, but injury or death has a lasting effect.

When replacement parts are required, use *Evinrude/Johnson Genuine Parts* or parts with equivalent characteristics, including type, strength and material. Using substandard parts could result in injury or product malfunction.

Torque wrench tightening specifications must be strictly followed. Replace any locking fastener (locknut or patch screw) if its locking feature becomes weak. Definite resistance to turning must be felt when reusing a locking fastener. If replacement is specified or required because the locking fastener has become weak, use only authorized *Evinrude/Johnson Genuine Parts*.

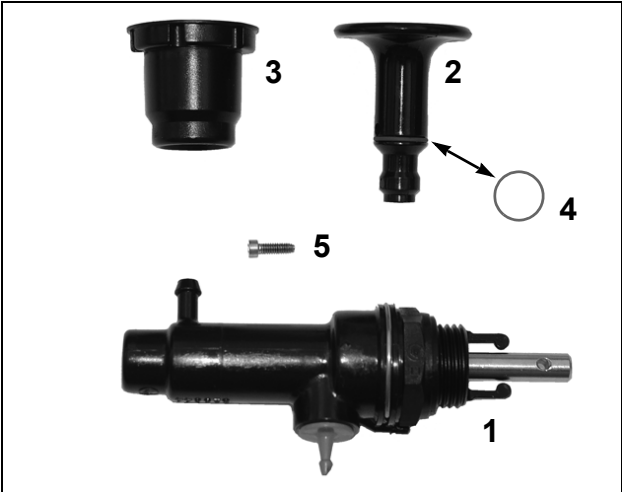
If you use procedures or service tools that are not recommended in this instruction sheet, **YOU ALONE** must decide if your actions might injure people or damage the outboard.

TO THE INSTALLER: Give this sheet to the owner. Advise the owner of any special operation or maintenance information contained in the instructions.

TO THE OWNER: Save these instructions in your owner's kit. This document contains information important to the future use and maintenance of your engine.



PRIMER PUMP



Ref	P/N	Name of Part	Qty
1	432142	PRIMER PUMP	1
2	334365	KNOB	1
3	335573	NUT	1
4	330992	O-RING	1
5	329054	SCREW	1

⚠

WARNING

⚠

To prevent accidental starting while servicing, twist and remove all spark plug leads.

Use caution when working on any pressurized fuel system. Wear safety glasses and work in a well ventilated area.

Before starting any fuel system service, carefully relieve fuel system pressure. Failure to properly relieve fuel system pressure can result in spraying fuel and/or excessive fuel spillage during servicing.

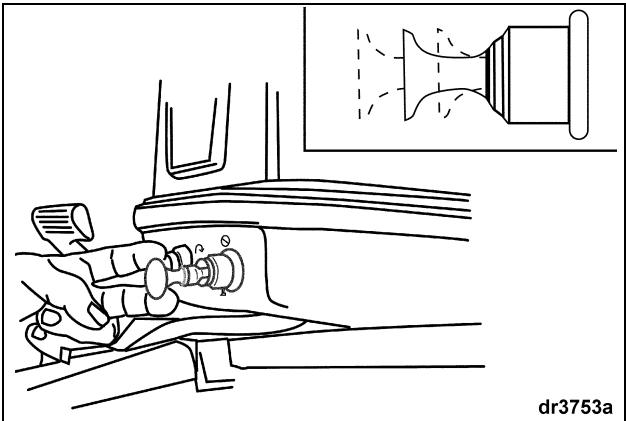
Extinguish all smoking materials and make certain no open flames or ignition sources exist.

Fuel is flammable and can be explosive under certain conditions.

Primer Pump Installation

IMPORTANT: This primer pump kit may be installed in whole or in part on the following Evinrude/Johnson outboards:

Model Year Outboards	Primer Pump Kit Usage
1988 and prior	ALL kit components must be installed
1989 to present	Select kit components can be used as required



After installation, check for fuel leaks.

⚠

WARNING

⚠

Failure to check for fuel leaks could allow a leak to go undetected, resulting in fire or explosion and may cause personal injury or property damage.