



**EVINRUDE<sup>®</sup>**  
**Johnson<sup>®</sup>**

## INSTRUCTIONS

For safety reasons, exhaust housing servicing should only be performed by authorized *Evinrude/Johnson* dealers. These installation instructions contain information that can help prevent personal injury and damage to equipment. Understand the following symbols before proceeding:



### DANGER



Indicates an imminently hazardous situation which, if not avoided, **WILL** result in death or serious injury.



### WARNING



Indicates a potentially hazardous situation which, if not avoided, **CAN** result in severe injury or death.



### CAUTION



Indicates a potentially hazardous situation which, if not avoided, **MAY** result in minor or moderate personal injury or property damage. It also may be used to alert against unsafe practices.

### TO THE OWNER

The assembly procedures outlined in this sheet should be performed by a skilled technician. If you have questions, see your dealer. Save these instructions in your owner's kit. This sheet contains information important to future repairs of your outboard.

### TO THE TECHNICIAN

The information contained in this sheet is intended AS A SERVICE SUPPLEMENT and must be used in addition to service literature.

For specific information related to exhaust housing servicing, refer to the following literature:

- 2003 Parts Catalog, P/N 5005331 (Final Edition 3.5HP Models)
- 2002/2003 Service Manual, P/N 5005466 (SN/ST 2 Stroke Models: 3.5, 6, 8)

## ASSEMBLY REQUIREMENTS – EXHAUST HOUSING, P/N 5005498

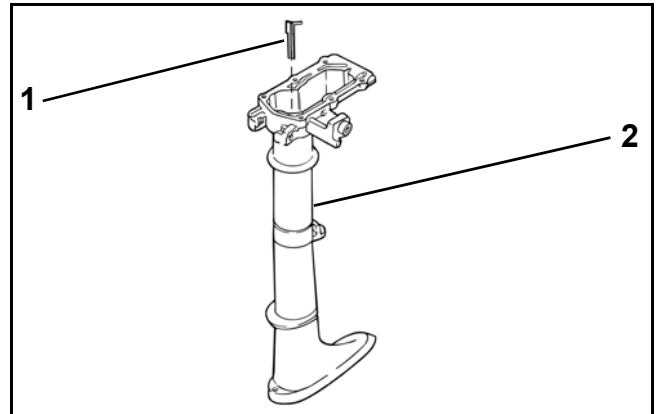
Exhaust housing, P/N 5005498, replaces exhaust housings P/N 451591 and P/N 451521.

Installation of exhaust housing, P/N 5005498, requires additional components on the following models: J3RTSIA, J3RTVSIA, E3ROSIA, J3RSNF and J3RSTB.

**J3RTSIA, J3RTVSIA, E3ROSIA** models require:

- Deflector, P/N 350937
- Exhaust housing, P/N 5005498

(Replaces exhaust housing P/N 451591)



1. Deflector
2. Exhaust housing

001236



### CAUTION



Refer to the appropriate service manual for disassembly and assembly of the exhaust housing. Failure to follow the procedures outlined in the service manual may result in damage to the product or affect the performance of the product.

Printed in the United States.

©2005 BRP US Inc. All rights reserved.

TM, ® Trademarks and registered trademarks of Bombardier Recreational Products Inc. or its affiliates

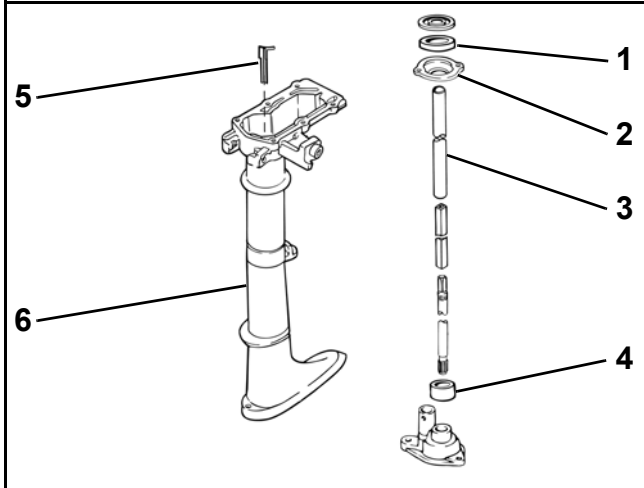
† Permatex is a registered trademark of Permatex.



**J3RSNF, J3RSTB** models require:

- Seal (lower), P/N 451612
- Crankcase head, P/N 451613
- Driveshaft tube, P/N 451610
- Grommet, P/N 115003
- Deflector, P/N 350937
- Exhaust housing, P/N 5005498

(Replaces exhaust housing, P/N 451521)



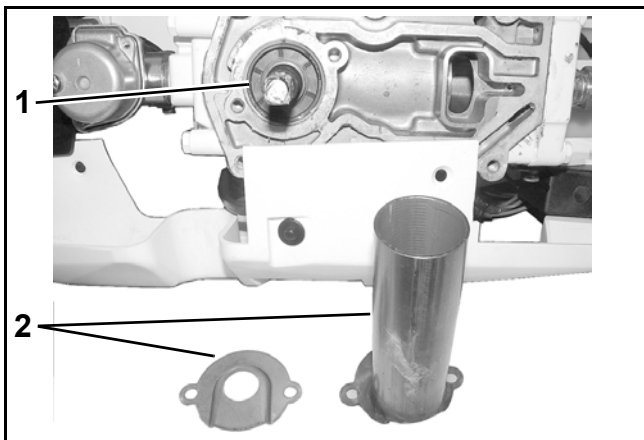
1. Seal, lower
2. Crankcase head
3. Driveshaft tube
4. Grommet
5. Deflect
6. Exhaust housing

001234

Refer to the appropriate service manual for disassembly and assembly of the exhaust housing.

PERFORM THE FOLLOWING PROCEDURES PRIOR TO REASSEMBLY.

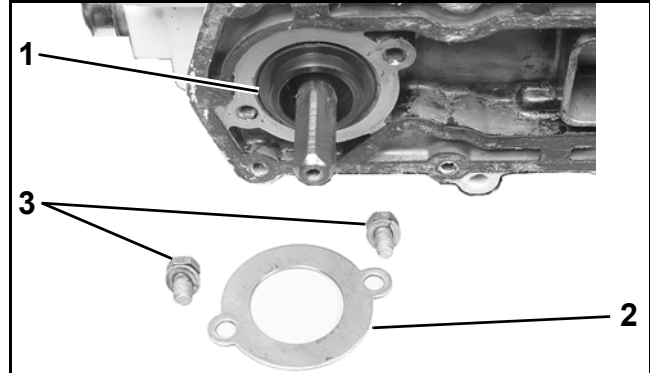
Remove the crankcase head and lower seal from the powerhead.



1. Crankcase head
2. Seal, lower

001235

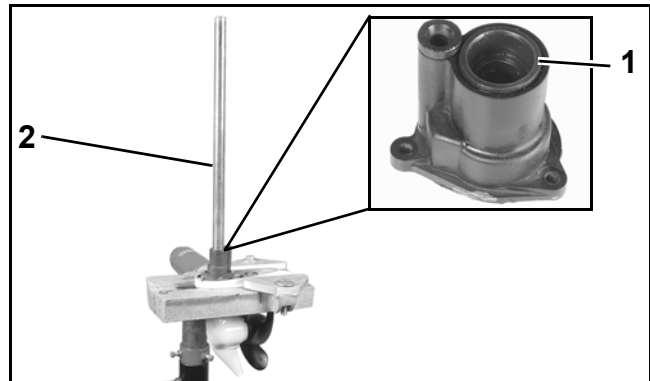
Install replacement seal (P/N 451612) and crankcase head (P/N 451613). Lightly coat threads of the two crankcase head screws with gasket sealing compound. Torque screws to 60 to 84 in. lb. (7-9 N·m).



1. Seal
2. Crankcase head
3. Screws

001227

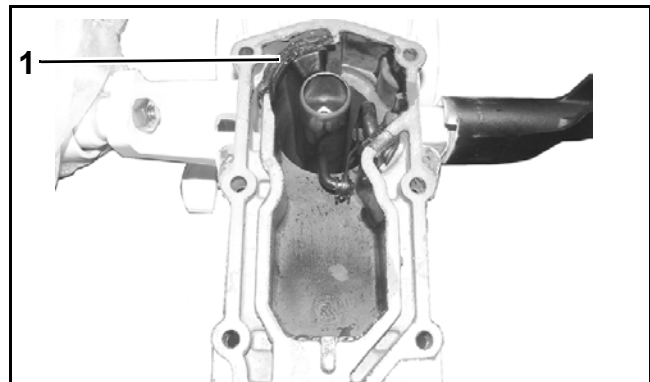
Install grommet onto water pump housing and insert driveshaft tube into grommet.



1. Grommet
2. Tube

001237

Coat deflector to exhaust housing mating surface with *Permatex No. 2*<sup>†</sup> and install deflector into exhaust housing.



1. Deflector

001232