



**EVINRUDE<sup>®</sup>**  
**Johnson<sup>®</sup>**




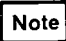
## Service Replacement Distributor

### Safety Considerations

These instructions will alert you to certain things you should do very carefully. If you don't, you could . . .

- hurt yourself, or bystanders
- hurt boat operator, passengers
- damage the machinery


Safety symbol, , appears next to information important to prevent you and others from being hurt.

Note symbol, , appears next to information important to keep machinery from being damaged

### Preface

The enclosed distributor is the service replacement for original equipment distributor. This distributor may be either a Prestolite or Mallory as identified by the metal tag on the body of the distributor. Determine which make distributor is being replaced and follow the appropriate instructions below.

#### To The Installer

 **Give these installation instructions to the future owner.** The instructions contain safety warnings and other information vital to the continued safe use of the product.

#### To The New Owner


Retain these Installation Instructions with your Owner's/Operator's Manual. They contain a list of service parts, installation, adjustment and operating information for future reference.

### Product Reference & Illustration

When reference is made to a brand name, product or specific tool, an equivalent product may be used in place of the referred to product. Substitute products used must have equivalent characteristics, including type, strength, and materials. Incorrect substitution may result in product malfunction and possible injury to the operator and/or passengers.

All photographs and illustrations used may not necessarily depict actual models or equipment, but are intended only for reference. Specifications used are based on the latest product information available at the time of publication.

### Instructions For Installing A Mallory Distributor

 **Disconnect battery cables before servicing electrical components to prevent sparks in engine compartment.**

When replacing a Mallory distributor with a new Mallory distributor:

- Disconnect distributor to coil lead from stud on body of old distributor.
- Remove old distributor and install new one following procedure in service manual. Remove lead that comes with distributor and discard.
- Reconnect old coil to distributor lead to stud on distributor body.

Printed in the United States.

©2004 BRP US Inc. All rights reserved.

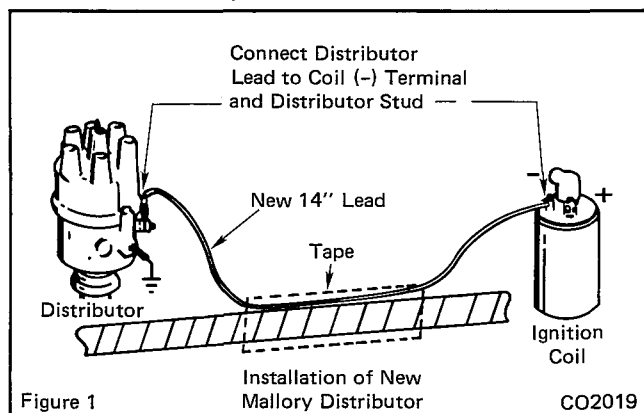
TM, © Trademarks and registered trademarks of Bombardier Recreational Products Inc. or its affiliates.

When replacing a Prestolite distributor with a new Mallory distributor:

a. Disconnect distributor lead from coil negative (-) terminal.

b. Remove old distributor and install new one following procedure in service manual.

c. A new 14" ignition lead is supplied with the distributor. Connect the loose end to the coil negative (-) terminal. Tape lead to motor cable. See Figure 1.



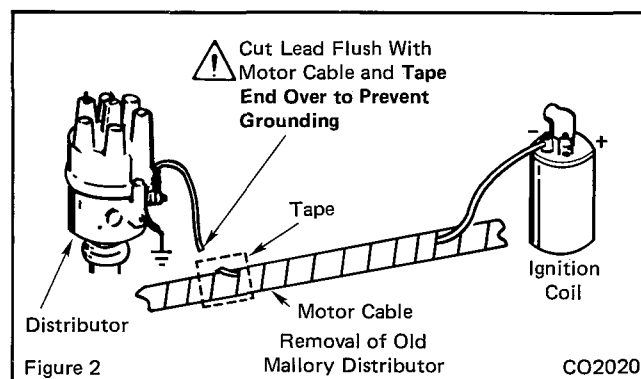
#### Instructions For Installing A Prestolite Distributor.

**! Disconnect battery cables before servicing electrical components to prevent sparks in engine compartment.**

When replacing a Mallory distributor with new Prestolite distributor:

a. Disconnect coil to distributor lead from stud on body of the Mallory distributor.

**! b. Cut lead off flush with motor cable, and wrap tape over end to prevent grounding. See Figure 2.**



c. Remove old distributor and install new one following procedure in service manual.

d. Connect distributor lead to coil negative (-) terminal. Tape lead to motor cable.

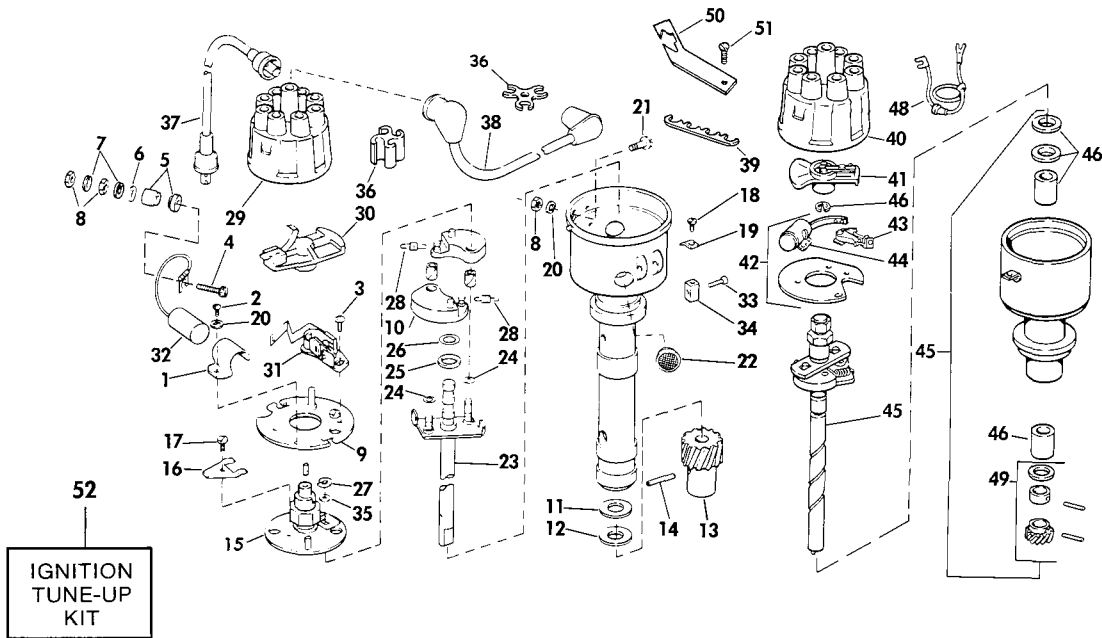
When replacing a Prestolite distributor with new Prestolite distributor:

a. Disconnect distributor lead from coil negative (-) terminal.

b. Remove old distributor and install new one following procedure in service manual.

c. Reconnect distributor lead to coil negative (-) terminal.

# DISTRIBUTOR GROUP



SD0075 - H3

834062

REF NO	PART NO	NAME OF PART	QTY PER ASSY	REF NO	PART NO	NAME OF PART	QTY PER ASSY
△ *	983452	DISTRIBUTOR ASSY, Mallory	1	△ 29	982209	DISTRIBUTOR CAP ASSY	1
1	313122	BRACKET, Cond mtg	1	30	982211	ROTOR ASSY	1
2	313123	SCREW, Cond bracket	1	31	382135	CONTACT PT SET	1
3	313124	SCREW, Contact point adjusting	1	32	382136	CONDENSER ASSY	1
4	313125	SCREW, Primary terminal	1	33	316141	RIVET, Swivel	2
5	981738	INSULATOR, Primary terminal	1	34	910060	SWIVEL	2
6	313127	WASHER, Primary terminal	1	35	910065	WASHER, Governor post	1
7	313128	LOCKWASHER, Primary terminal	1	36	910231	RETAINER, 3 Wire	2
8	910064	HEX NUT, Primary terminal	4	36	910230	RETAINER, 4 Wire	2
9	313130	PLATE, ckt brkr	1	△ 37	981660	LEAD ASSY, Distributor to coil	1
10	910063	WEIGHT, Governor	2	△ 38	981787	LEAD ASSY, Spark 1	1
11	313132	THRUST WASHER	1	△ 38	981779	LEAD ASSY, Spark 2	1
12	313133	THRUST WASHER, Bronze	1	△ 38	981785	LEAD ASSY, Spark 3, 4	2
13	313134	GEAR, Distr drvn	1	△ 38	981783	LEAD ASSY, Spark 5, 6	2
14	910062	ROLL PIN, Gear	1	△ 38	981782	LEAD ASSY, Spark 7, 8	2
15	•	ADVANCE PLATE & CAM	1	39	372540	RETAINER, Ignition leads	2
16	•	CLAMP, Cam hldn	1	△ *	983453	DISTRIBUTOR ASSY, Prestolite, IBM7013C	1
17	•	SCREW, Clamp	1	△ 40	983452	CAP ASSY, DIST	1
18	910058	SCREW, Cap attaching	2	41	982880	ROTOR	1
△ 19	313140	CLIP, Cap attaching	2	42	980895	PLATE ASSY, Brkr	1
20	910065	LOCKWASHER	3	43	980893	CONT SET, Brkr	1
21	910058	SCREW	2	44	980894	CONDENSER PKG	1
△ 22	313138	SCREEN, Ventilation	1	△ 45	983456	DISTRIBUTOR SHAFT & HOUSING ASSY	1
23	982210	MAIN SHAFT ASSY	1	46	982335	BEARING, ABS, Brz	1
24	313145	WASHER, Wt posts	2	△ 48	983457	LEAD ASSY	1
25	313146	WASHER, Main shaft, lower	1	49	982337	GEAR, Collar & parts pkg	1
26	313147	WASHER, Main shaft to upper	1	50	910417	BRACKET, Ignition leads	1
27	313148	RETAINER, Weight to post	2	51	311415	SCREW, Retainer, stbd rear	1
28	313149	SPRING, Adv wt (painted blue)	1	52	173619	IGNITION TUNE-UP KIT, Mallory	1
28	316207	SPRING, Adv wt (painted black)	1	52	173829	IGNITION TUNE-UP KIT, Prestolite	1

\* Not Shown  
□ Models w/o Power Steering

• No Part Number