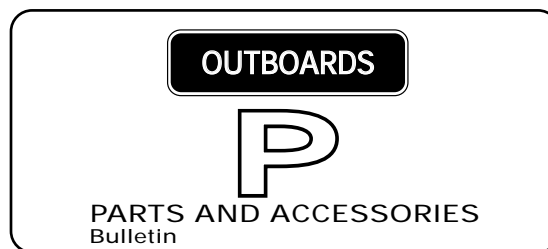
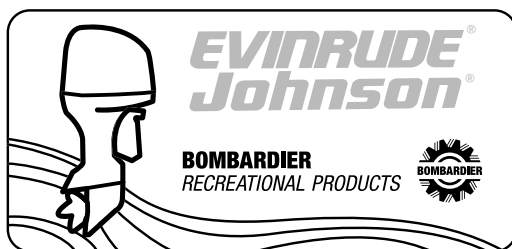


Please route to:

<input type="checkbox"/> Service	<input type="checkbox"/> Init.
<input type="checkbox"/> Sales	<input type="checkbox"/>
<input type="checkbox"/> Parts	<input type="checkbox"/>



Date: August, 2001

No. 2001-01

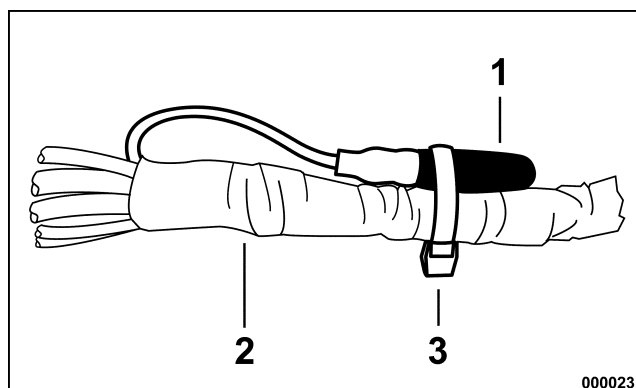
SUBJECT: Rectifier/Regulator Purple Lead

PROCEDURE

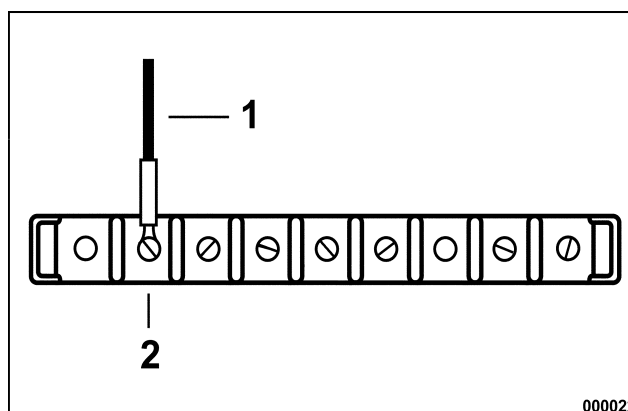
Replacement rectifier/regulators have been improved to automatically turn on under normal engine operation. These improved rectifier/regulators do not have a purple lead.

Install the new rectifier/regulator as described by the instruction sheet or *Evinrude/Johnson* Service Manual. Refer to the following supplemental information for rectifier/regulators that do not have the purple lead.

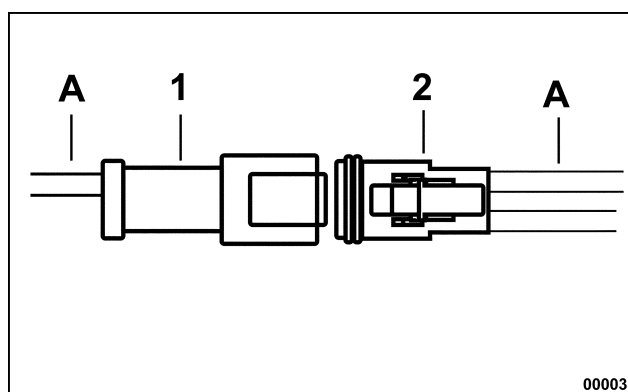
For engines that have bullet type connectors, isolate and secure the existing engine harness purple lead. Install P/N 328074 cap (1) on lead and secure to engine harness (2) with P/N 320107 tie strap (3).



For engines that use terminal board connectors, secure engine harness purple lead (1) to its existing position on the terminal board (2). The secured ring terminal should be coated using *Evinrude Black Neoprene Dip* P/N 909570.



For engines that use *System Check*® wiring, connect new rectifier/regulator connector (1) to engine harness connector (2). Align grey leads (A).



IMPORTANT: Rectifier/regulators with a purple lead should not be used on current engines where the engine harness purple lead for the rectifier/regulator has been eliminated.