



INSTRUMENT & CABLE ASSEMBLIES

P/N 391044 & 391045

FOR 25 & 35 H.P. ELECTRIC START OUTBOARDS

Installation Instructions

© OUTBOARD MARINE CORPORATION 1979 ALL RIGHTS RESERVED

PREFACE

All equipment necessary for installation of the electric starting system is included with your engine with the exception of the battery. Installation consists of mounting the instrument panel on the boat dashboard, making the necessary electrical connections at the engine and dashboard and mounting the battery in the boat.

TOOLS REQUIRED

Tools required for the average installation consists of a drill and a 1-5/8" hole saw, Phillips head screwdriver and 3/8", 7/16", 1/2", 9/16" and 15/16" open end wrenches.

TWIN MOTOR INSTALLATION

A separate instrument panel installation must be provided for each engine. Before cutting holes in the boat dashboard, plan their location carefully.

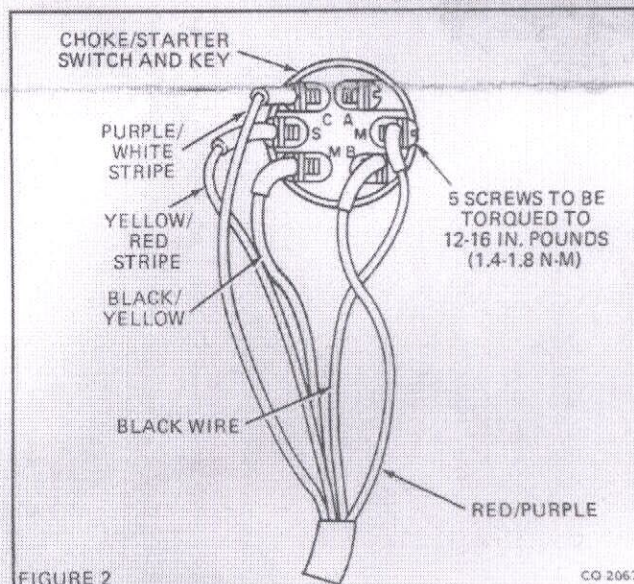
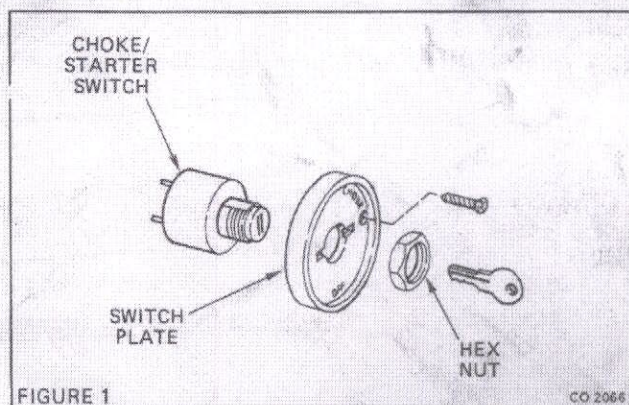
On dual engine installations, two 12 volt batteries are preferred since they allow the engines to be wired independently for maximum reliability.

CONTROL PANEL INSTALLATION

The instrument cable and dash panel are supplied as an assembly. You must remove the switch face nut and panel to install.

1. Determine area on boat dashboard where instrument panel will be located. Insure that there is adequate clearance behind the dashboard for the switch and cable.
2. Place dash panel template, Figure 8 in this instruction, against dash at desired location and center punch the 1-5/8" hole center location.
3. Remove hex nut securing switch to dash panel.

4. Route cable behind dash and pull switch through hole in boat dashboard.
5. Place dash panel over switch and secure with face nut. Tighten finger tight.
6. Attach dash panel and switch assembly to boat dashboard with screws provided.
7. Route cable assembly to the stern of boat. Cable should be neatly fastened to boat in an out-of-the-way place. Necessary clamps and screws are provided for this purpose.



PRODUCT REFERENCES & ILLUSTRATIONS

WHEN REFERENCE IS MADE IN THESE INSTALLATION INSTRUCTIONS TO A BRAND NAME, NUMBER, PRODUCT OR SPECIFIC TOOL, AN EQUIVALENT PRODUCT MAY BE USED IN PLACE OF THE REFERRED TO PRODUCT UNLESS SPECIFICALLY STATED OTHERWISE. EQUIVALENT PRODUCTS WHICH ARE USED MUST MEET ALL CURRENT U.S. COAST GUARD SAFETY REGULATIONS AND ABYC-BIA STANDARDS TO AVOID HAZARDS.

ALL PHOTOGRAPHS, ILLUSTRATIONS, AND SPECIFICATIONS USED IN THESE INSTALLATION INSTRUCTIONS MAY NOT NECESSARILY DEPICT ACTUAL MODELS OR EQUIPMENT BUT ARE INTENDED FOR REFERENCE ONLY BASED ON THE LATEST PRODUCT INFORMATION AVAILABLE AT THE TIME OF PUBLICATION.

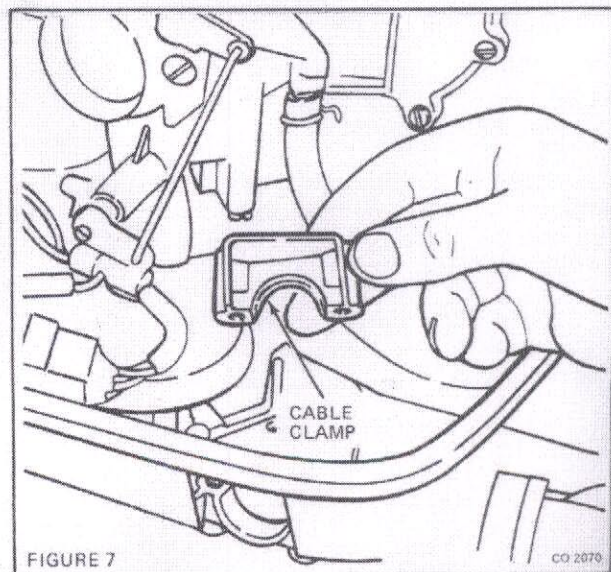
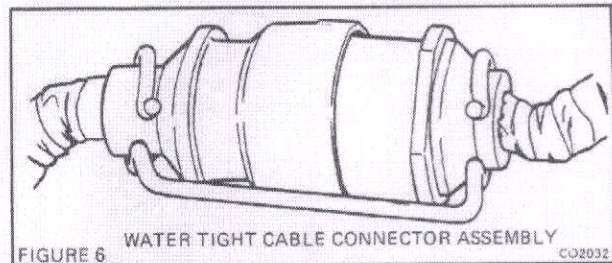
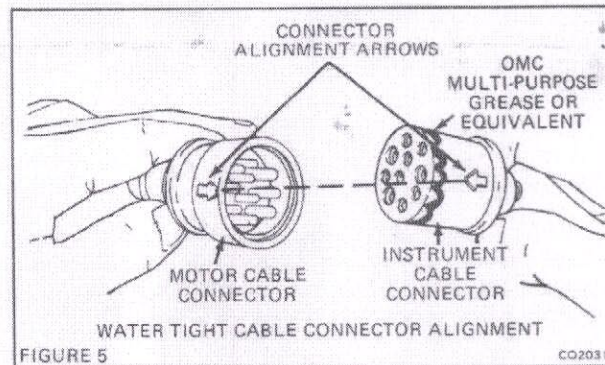
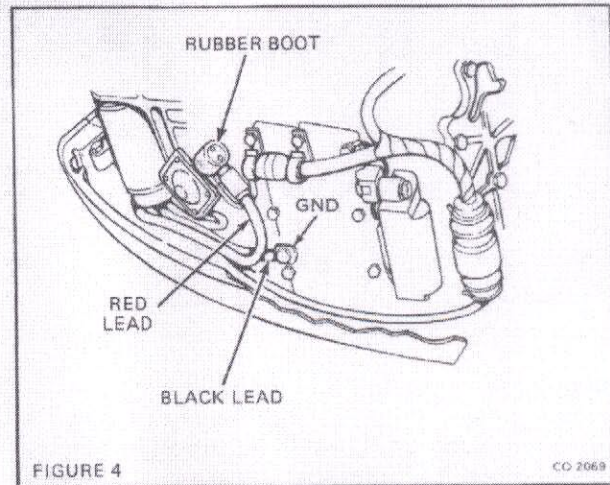
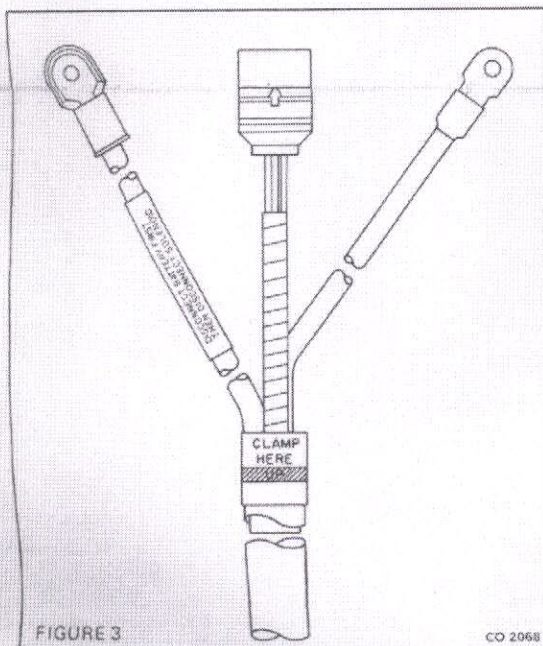
MOTOR CONNECTIONS

1. Remove cable entry clamp from lower motor cover. See Figure 7.
2. Insert loose end of instrument cable assembly through opening in lower motor cover. Band on cable indicates location and clamping area. See Figure 3.
3. Ground the heavy black lead to stud on exhaust cover. See Figure 4.
4. Connect the heavy red lead to the large terminal of solenoid as shown in Figure 4. After making this connection, make certain rubber boot properly covers the terminal.

NOTE

TIGHTEN ALL CONNECTIONS SECURELY, AS LOOSE CONNECTIONS MAY CAUSE DAMAGE TO ELECTRICAL SYSTEM.

5. Apply a small amount of OMC Multi-Purpose Grease or equivalent to instrument cable connector, align arrows on motor and instrument cables, and push connectors firmly together. See Figure 5.
6. Secure cables with wire clip as shown in Figure 6.
7. Hold cable in position in notch of lower motor cover and reinstall cable entry clamp. See Figure 7.
8. Snap wire clip securing cables into spring clamp on cylinder head.



ACCESSORY CONNECTIONS

Power take-off for any accessories should be made directly at the battery terminals unless otherwise indicated in the accessory instruction sheet.

BATTERY INSTALLATION

For best performance, we recommend a 12 volt battery with a 350 amperes cold cranking rating of 0° F (-18° C) and 100 minutes reserve capacity rating of 80° F (27° C). (61 ampere hour reference.)

Position battery in boat so that cables will have some slack and steering attachments clear when engine is tilted and turned thru all positions.

A battery box is recommended for mounting the battery. It should be securely fastened to the boat and have provisions for venting the battery gas, which all batteries expel while charging. A 3/16" hole at each end of the cover is sufficient.

SAFETY WARNING

THE GASES EMITTED BY A CHARGING BATTERY ARE EXPLOSIVE WHEN CONFINED. BATTERY MUST BE WELL VENTILATED.

Secure all powerhead electrical connections before connecting battery cables to battery.

NOTE

CONNECT POSITIVE BATTERY LEAD (RED) TO THE POSITIVE (+) BATTERY TERMINAL. CONNECT NEGATIVE BATTERY LEAD (BLACK) TO THE NEGATIVE (-) BATTERY TERMINAL. EVEN A MOMENTARY REVERSAL OF THESE CONNECTIONS WILL DAMAGE ELECTRICAL EQUIPMENT IN ENGINE AND BOAT.

NOTE

TIGHTEN BATTERY TERMINALS WITH A WRENCH. LOOSE CONNECTIONS MAY CAUSE DIFFICULT STARTING AND DAMAGE ELECTRICAL EQUIPMENT IN ENGINE AND BOAT.

For service and warranty information on the battery, refer to instructions provided by the battery manufacturer.

