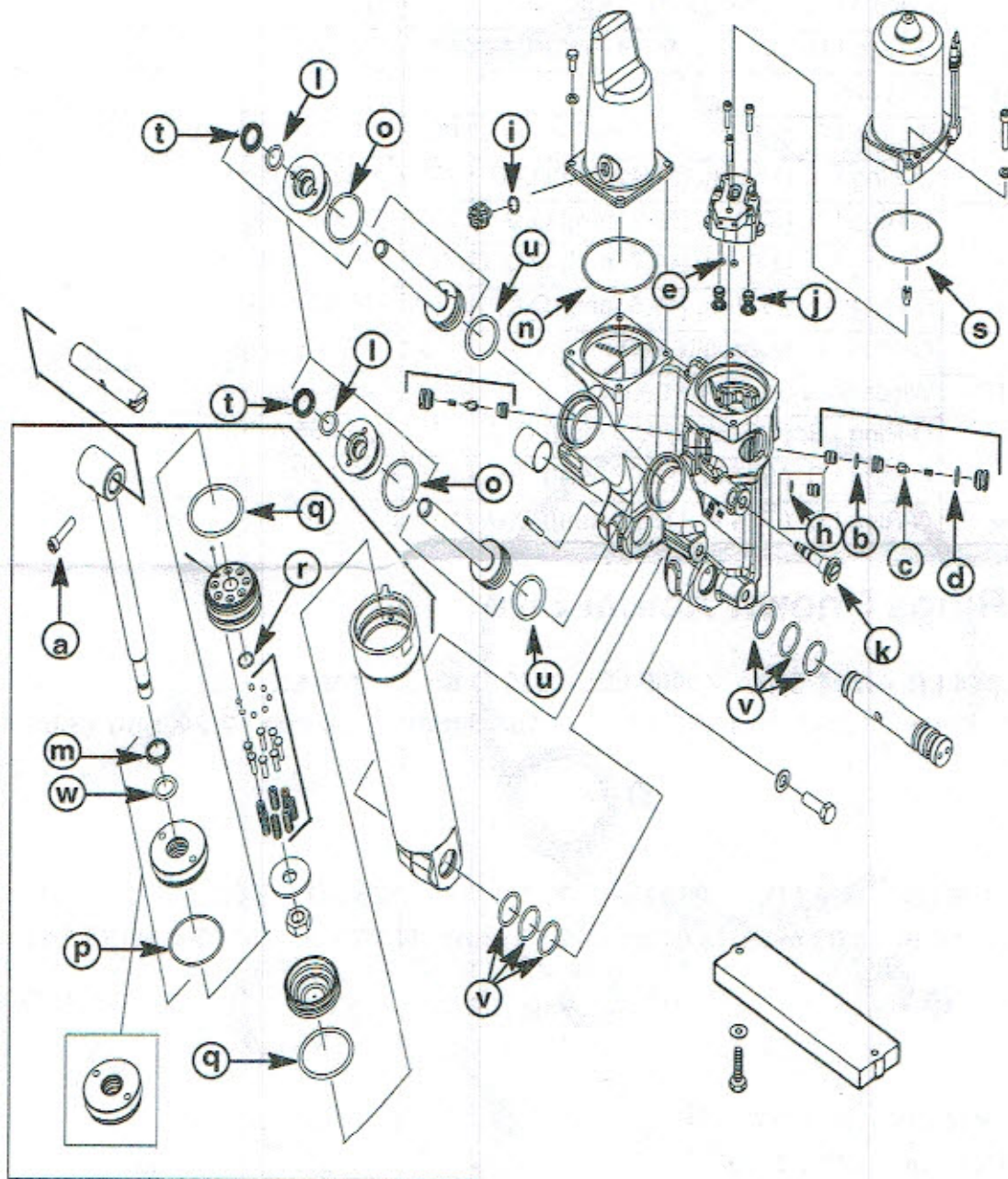


# 878408A-1

## O-RING KIT

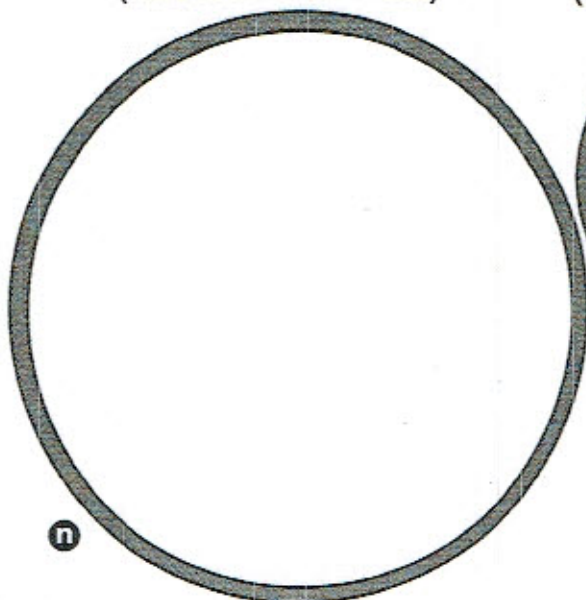
### Components Contained In Kit

*NOTE: Refer to appropriate Service Manual for disassembly/assembly instructions.*

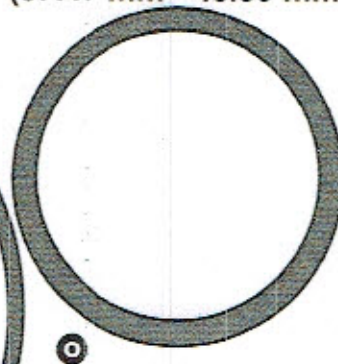


Ref.	Description	Qty.
a	Trilobe Pin (17-821539)	1
b	O-Ring I.D. (.364 in. [9.25 mm]) O.D. (.504 in. [12.80 mm])	2
c	Poppet Assy.	2

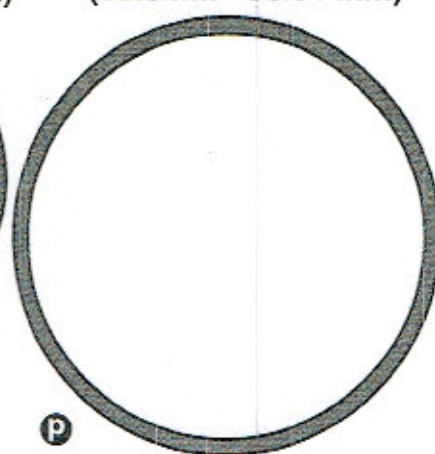
2.85 I.D. - 3.02 O.D.  
(72.5 mm - 76.71 mm)



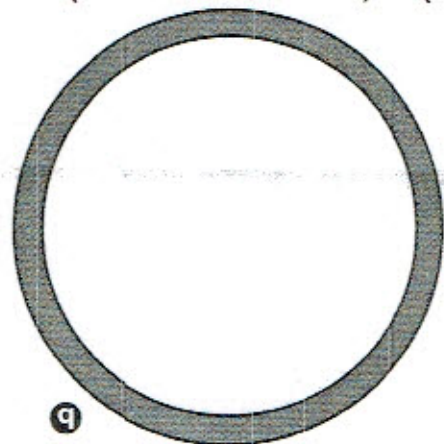
1.48 I.D. - 1.72 O.D.  
(37.47 mm - 43.69 mm)



2.07 I.D. - 2.23 O.D.  
(52.5 mm - 56.64 mm)



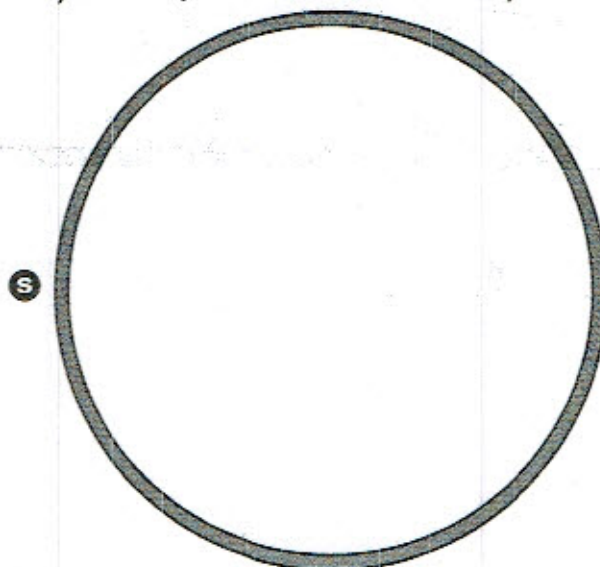
1.96 I.D. - 2.24 O.D.  
(49.7 mm - 56.9 mm)



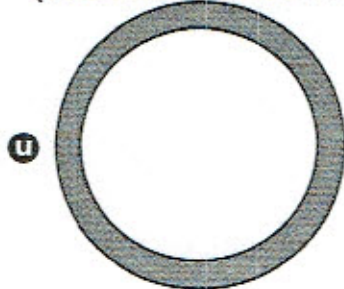
.531 I.D. - .649 O.D.  
(13.5 mm - 16.48 mm)



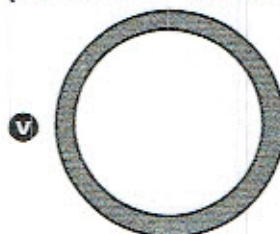
2.74 I.D. - 2.88 O.D.  
(69.60 mm - 73.15 mm)



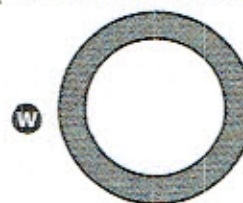
1.23 I.D. - 1.51 O.D.  
(31.24 mm - 38.35 mm)



.987 I.D. - 1.19 O.D.  
(25.07 mm - 30.23 mm)



.734 I.D. - 1.01 O.D.  
(18.64 mm - 25.65 mm)





**O-RING KIT**

d	O-Ring I.D. (.489 in. [12.42 mm]) O.D. (.629 in. [15.98 mm])	2
e	O-Ring I.D. (.145 in. [3.68 mm]) O.D. (.285 in. [7.24 mm])	2
f	O-Ring I.D. (.144 in. [3.66 mm]) O.D. (.284 in. [7.21 mm])	1
g	O-Ring I.D. (.176 in. [4.47 mm]) O.D. (.316 in. [8.03 mm])	1
h	O-Ring I.D. (.239 in. [6.07 mm]) O.D. (.379 in. [9.63 mm])	2
i	O-Ring I.D. (.426 in. [10.82 mm]) O.D. (.566 in. [14.38 mm])	1
j	O-Ring I.D. (.301 in. [7.65 mm]) O.D. (.441 in. [11.20 mm])	2
k	Valve Assy (813442A-2)	1
l	O-Ring I.D. (.612 in. [15.54 mm]) O.D. (.818 in. [20.78 mm])	2
m	Tilt Wiper	1
n	O-Ring I.D. (2.85 in. [72.5 mm]) O.D. (3.02 in. [76.71 mm])	1
o	O-Ring I.D. (1.48 in. [37.47 mm]) O.D. (1.72 in. [43.69 mm])	2
p	O-Ring I.D. (2.07 in. [52.5 mm]) O.D. (2.23 in. [56.64 mm])	1
q	O-Ring I.D. (1.96 in. [49.7 mm]) O.D. (2.24 in. [56.90 mm])	2
r	O-Ring I.D. (.531 in. [13.5 mm]) O.D. (.649 in. [16.48 mm])	1
s	O-Ring I.D. (2.74 in [69.60 mm]) O.D. (2.88 in. [73.15 mm])	1
t	Wiper Seal	2
u	O-Ring I.D. (1.23 in. [31.24 mm]) O.D. (1.51 in. [38.35 mm])	2
v	O-Ring I.D. (.987 in. [25.07 mm]) O.D. (1.19 in. [30.23 mm])	6
w	O-Ring I.D. (.734 in. [18.64 mm]) O.D. (1.01 in. [25.65 mm])	1

**O-Rings Shown Actual Size**

.364 I.D. - .504 O.D.    .489 I.D. - .629 O.D.    .145 I.D. - .285 I.D.    .144 I.D. - .284 O.D.  
 (9.25 mm - 12.80 mm)    (12.42 mm - 15.98 mm)    (3.68 mm - 7.24 mm)    (3.66 mm - 7.21 mm)



.176 I.D. - .316 I.D.    .239 I.D. - .379 O.D.    .426 I.D. - .566 O.D.    .301 I.D. - .441 O.D.  
 (4.47 mm - 8.03 mm)    (6.07 mm - 9.63 mm)    (10.82 mm - 14.38 mm)    (7.65 mm - 11.20 mm)



.612 I.D. - .818 O.D.  
 (15.54 mm - 20.78 mm)

