



Part #30460

Starting & charging specialists

3921 Navy Blvd.
Pensacola, FL 32507-1296

Telephone 850-455-5476

Facsimile 850-453-2630

Toll Free 800-722-2720

SEE REVERSE SIDE FOR IMPORTANT INFORMATION

WIRING DIAGRAM FOR ARCO HIGH PERFORMANCE STARTER

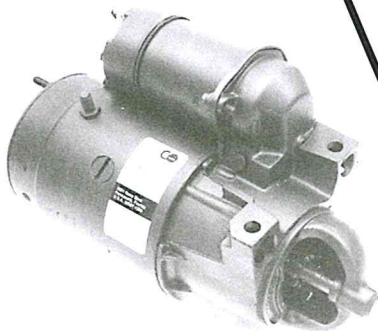
THE ARCO HIGH PERFORMANCE REPLACEMENT STARTER IS A FAR SUPERIOR UNIT THAN THE ORIGINAL EQUIPMENT. **THIS UNIT FEATURES HIGH PERFORMANCE IN A COMPACT SIZE.** BELOW YOU WILL FIND THE TERMINAL LOCATION FOR WIRE PLACEMENT. IF YOU HAVE ANY QUESTIONS ON INSTALLATION OF THIS UNIT PLEASE CALL OUR TECHNICAL DEPARTMENT 1-800-722-2720 AND WE WILL BE GLAD TO ASSIST YOU. THANK YOU FOR USING ARCO QUALITY ELECTRICAL PRODUCTS.

IMPORTANT

On certain engine blocks the original mounting bolts will bottom out before the starter is completely secure. This will cause an engagement problem with the starter.

Please use the supplied mounting bolts and washers when installing the ARCO starter. Bolts Must Be Tightened To 30 FT LBS Torque. Failure To Do So Will Allow Starter To Become Loose On The Engine and Breakage Of The Bolts. No Warranty For Starters That Have Been Loose On The Engine.

*Install The Sealing Gasket As Shown **Only** When Replacing The Larger 10MT Style Starter. This Will Provide Extra Protection From Water Leakage Around The Bell Housing Opening.*



Replaces All 10MT Starters Using One Short And One Long Bolt Straight Across Mounting Perfectly. 30460 Provides 16% More Cranking Power While Drawing Much Less Current.



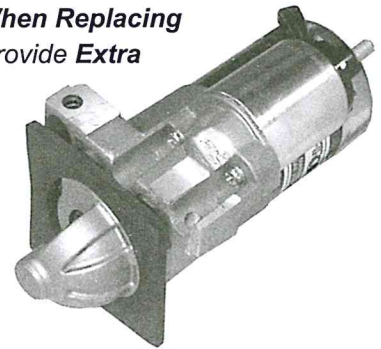
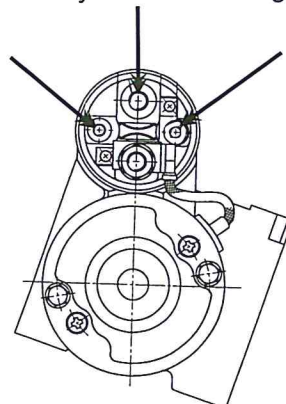
Sealing Gasket

Battery Connection

*****Warning Do Not Over Tighten*****
Hold Battery Cable While Tightening

R
Relay Terminal
(If Used)

S
Start Switch



**** IMPORTANT INFORMATION PLEASE READ ****

Please be aware of two **non-warranty** issues with the **New High Performance Gear Reduction type starters**.

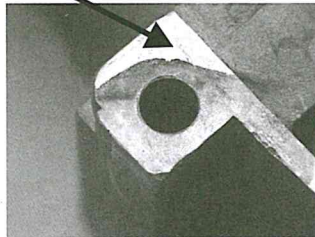
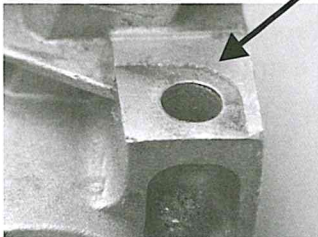
We have seen a high number of problems with **water ingestion into the cylinders caused by leaking exhaust manifolds, gaskets and risers**. Due to the high power of these starters damage will result to the starter, mounting bolts, and or ring gear if water is present on top of the piston. This is not the fault of the starter. Replacing the starter without checking for water intrusion will only result in more damage.

Water damage inside the starter is not covered under warranty. For part numbers 30460 and 30470 always remove the lower case bolt and check for rust. For part number 30433 you will need to remove the back plate. If water is pumped into the motor portion of the starter from the flywheel it will not drain out.

These problems, if left unchecked, will result in premature starter failure regardless of the starter manufacturer. If you ever have any questions please call our toll free tech service @ 800-722-2720.

Mounting Pad Damage Indicates that the starter has been loose on the engine. Possibly caused by water ingestion into the cylinder.

The engine may not experience a complete hydro lock. If enough water is on top of the piston to raise the compression to a high level the starter bolts and mounting pad will be stressed beyond normal load conditions.



The Outside Condition of The Starter May Be Good.

Always Remove Lower Starter Case Bolt To Check For Water Damage

Bulletin No. 30470

