



ELECTRICAL PRODUCTS

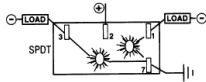
Rocker Switches

Weather Resistant Illuminated Rocker Switches ON-OFF-ON SPDT

Dependent pilot lights - each light illuminates in "on" position

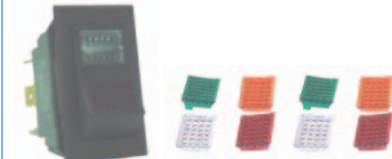


- Certified to IP 66 and IP 68 - protected against dust, prolonged spray and submersion
 - Supplied with neoprene mounting gasket
 - Removable actuators
 - Brass blade terminals, silver contacts
- Rated: 20 amps @ 12 VDC



| Part # | Lens Color | |
|-------------|------------|--------|
| | Top | Bottom |
| **RK19520AC | Amber | Clear |
| **RK19520AG | Amber | Green |
| **RK19520GC | Green | Clear |
| **RK19520RC | Red | Clear |

**RK19520K Rocker Switch Kit



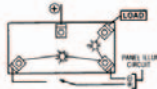
Snap in lens of choice
*Kit Includes 2 of each color

Weather Resistant Illuminated Rocker Switches OFF-ON SPST

One dependent pilot light - illuminates in "on" position
One independent pilot light - illuminates when panel lights "on"

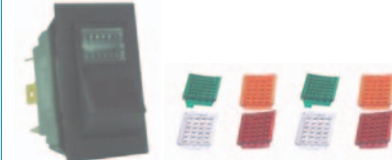


- Certified to IP 66 and IP 68 - protected against dust, prolonged spray and submersion
 - Supplied with neoprene mounting gasket
 - Removable actuators
 - Brass blade terminals, silver contacts
- Rated: 20 amps @ 12 VDC



| Part # | Lens Color | |
|-------------|------------|--------|
| | Top | Bottom |
| **RK19530AC | Amber | Clear |
| **RK19530AG | Amber | Green |
| **RK19530GC | Green | Clear |
| **RK19530RC | Red | Clear |

**RK19530K Rocker Switch Kit

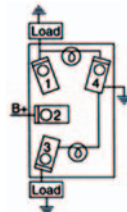


Snap in lens of choice
*Kit Includes 2 of each color

Weather Resistant Illuminated Rocker Switches ON-ON SPDT

*Dependent pilot lights - each light illuminates in "on" position

- Use to control circuit from 2 locations
 - Certified to IP 66 and IP 68 - protected against dust, prolonged spray and submersion
 - Supplied with neoprene mounting gasket
 - Removable actuators
 - Brass blade terminals, silver contacts
- Rated: 20 amps @ 12 VDC



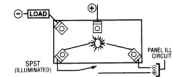
**RK19580K

Snap in lens of choice
Kit includes 2 of each color
Amber Clear Green Red

Weather Resistant Illuminated Rocker Switches Soft Spot Light OFF-ON SPST

One dependent pilot light - illuminates red in "on" position

- Certified to IP 66 and IP 68 - protected against dust, prolonged spray and submersion
 - Supplied with neoprene mounting gasket
 - Removable actuators
 - Brass blade terminals, silver contacts
- Rated: 20 amps @ 12 VDC



**RK19650
Screw Terminal



**RK19660
Blade Terminal

**Clamshell

ELECT. PROD.