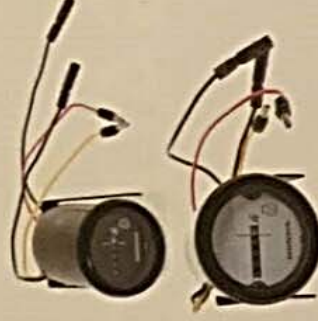


GAUGES

Hourmeter

Description

- 0-9999 hours
- Flat lens
- Drilling diameter 53MM
- Required parts:
Wiring Harness A: 32540-ZV5-911
Wiring Harness B: 32550-ZW5-U00



Application	Part Number	Comments
BF25D - BF250	06397-ZW5-U10	Black face, analogue display, req. part: 32550-ZV5-U00
BF20A - BF250A (Not with BF25 - BF50A4)	06397-ZW5-U00	White face, analogue display, req. part: 32550-ZW5-U00
	39700-ZV5-800AH	Black face, digital display, req. part: 32550-ZV5-910

Speedometer

Description

- Flat lens
- Drilling diameter 53MM
- Required parts:
Wiring Harness A: 32540-ZV5-911
Wiring Harness B: 32550-ZW5-U00
Wiring Harness 32550-ZV5-910



Application	Part Number	Comments
BF25D - BF250	06373-ZW5-U11	Black face, 10-50 mph/20-80 km/h, req. part 32550-ZW5-U00
	06373-ZW5-U01	White face 10-50 mph/20-80 km/h, req. part 32550-ZW5-U00

Tachometer

Description

- 0-7000 rpm
- Drilling diameter 86MM
- Required parts:
Wire harness: 32540-ZV5-911



Application	Part Number	Comments
BF25D - BF250	06375-ZW5-U11	Black face, drilling diameter 81MM
BF40A / BF50A, BF40D / BF50D	06375-ZW5-U01	White face, drilling diameter 81MM
BF20 / 25/30A, BF25 / 30D BF60 - BF250A	37250-ZV5-823	Black face, drilling diameter 81MM
BF80 - BF200	37250-ZV7-913	
BF20A - BF250	37250-ZW9-902	Black face, drilling diameter 86MM
	37250-ZV5-950AH	

Trimmeter

Description

- Up & down indicator
- Flat lens
- Drilling diameter 53MM
- Required parts:
Wire harness: 32540-ZV5-911



Application	Part Number	Comments
BF25D - BF250A	06372-ZW5-U11	Black face
BF25D - BF250	06372-ZW5-U01	White face
BF40 - BF250A	37260-ZV5-822	Black face